

LIGAMED[®]
— MEDICAL —

 **biomech**





4	About Ligamed	47	Biomech Non-Steril Lumbar TLIF Cage Titanium (Turn)
5	CERVICAL SYSTEM	48	Biomech Steril Lumbar ALIF Cage Peek
6	Cervical Cage	49	Anterior Lumbar Interbody Fusion (ALIF)
7	Biomech Sterile Cervical Peek Cage	50	Biomech Non-Steril Lumbar ALIF Cage Peek
8	Biomech Non-Sterile Cervical Peek Cage	51	Lumbar Alif Cage Expandable
9	Cervical Disc Prosthesis	52	Biomech Lumbar ALIF Cage Expandable Steril / Non-Steril
10	Steril-Cervical Disc Prosthesis	53	Lumbar Lateral Interbody Fusion XLIF Cage
11	Non Steril-Cervical Disc Prosthesis	54	Biomech Steril / Non-Steril Lumbar Lateral Interbody XLIF Peek
12	Cervical Cage With Plate	55	Biomech Non-Steril Lumbar Lateral Interbody XLIF Titanium
13	Biomech Sterile Cervical Cage With Plate	56	Biomech Lumbar Lateral Interbody Fusion Interspinous Fusion
14	Biomech Non-Sterile Cervical Cage With Plate Titanium	57	Device Ligamed Interspinous Fusion Device Steril / Non-Steril
15	Biomech Steril Cervical Interbody Cage Expandable(Anterior)Peek	58	THORACOLUMBAR STABILIZATION SYSTEM
16	Biomech Non- Steril Cervical Interbody Cage Expandable(Anterior)Peek	59	Polyaxial -Monoaxial-Spondylolisthesis-Connulated
17	Anterior Cervical Plate System	60	Biomech Posterior Polyaxial Stabilization Screw
18-19	Biomech Anterior Cervical Plate	61-62	Biomech Monoaxial Stabilization Screw
20	Biomech Anterior Cervical Screw	63-64	Biomech Polyaxial Spondylolisthesis Screw
21	Posterior Cervical Stabilization System	65-66-67-68	Biomech Posterior Polyaxial Cannulated Screw
22	Biomech Posterior Cervical Polyaxial Screw	69-70	Biomech Monoaxial Cannulated Screw
23	Biomech Posterior Cervical Rod	71-72	Biomech Polyaxial Spondylolisthesis Stabilization Screw
24	Biomech Posterior Cervical Transverse Connector	73-74-75	Biomech Polyaxial Stabilization Screw Double Thread Biomech
25	Domino Lateral-Hooks	76	Polyaxial Cannulated Spondylolisthesis Screw Double Posterior
26	Biomech Posterior Cervical Occipital Plate-Screw	77	Polyaxial Double Thread Stabilization Screw Polyaxial
27	Biomech Posterior Cervical Occipital Plate-Rod / Laminar Hook	78	Cannulated Stabilization Screw Double Thread Biomech
28	Biomech Cervical Pedicle Hook /Offset Hook Type Right-Type Left	79	Polyaxial Spondylolisthesis Screw Double Thread Biomech
29	LUMBAR CAGE SYSTEM	80	Polyaxial Cannulated Stabilization Screw Double Thread
30	Posterior Lumbar Interbody Fusion (PLIF)	81	Biomech Cannulated Stabilization Screw Double Thread Rods
31	Biomech Steril Lumbar PLIF Cage	82-83	&Locking Screws
32	Biomech Non-Steril Lumbar PLIF Cage	84	Biomech Titanium Rod
33	Biomech Steril Lumbar PLIF Titanium	85	Straight Peek Rod
34	Biomech Non-Steril Lumbar PLIF Titanium	86	Pre-Bent Peek Rod
35	Biomech Steril / Non-Steril Lumbar PLIF Expandable Peek	87	Co-CR-Mo Rod
36	Biomech Steril/Non-Steril Lumbar PLIF Expandable Titanium	88	Dynamic Rod
37	Transforninal Lumbar Interbody Fusion (TLIF)	89-90	Connectors
38	Biomech Steril Lumbar TLIF Cage Peek	91	Crosslink - Domino -Connectors
39	Biomech Non- Steril Lumbar TLIF Cage Peek	92	Pedicle Polyaxial Laminar Hook
40	Biomech Steril Lumbar TLIF Cage Titanium	93	Offset / Transverse Hook
41	Biomech Non-Steril Lumbar TLIF Cage Titanium	94	Posterior Sacral Screw / Blok
42	Biomech Steril Lumbar TLIF Cage Expandable Peek	95	Posterior Iliac / Sacro Iliac Screw
43	Biomech Non-Steril Lumbar TLIF Cage Expandable Peek	96	CORPECTOMY MESH
44	Biomech Steril Lumbar TLIF Cage Peek(Turn)	97	Corpectomy Mesh System
45	Biomech Non-Steril Lumbar TLIF Cage Peek(Turn)	98	Biomech Corpectomy Mesh
46	Biomech Steril Lumbar TLIF Cage Titanium (Turn)	99	Biomech / Ligamed

Creative, Permanent Solutions





Ligamed Medical Equipment Industry and Trade Ltd. as a designer, manufacturer and seller of spinal surgery implants, its product portfolio consists of “Thoracolumbar Stabilization System“, “Cervical Cage and Prosthesis System“, “Lumbar Cage System“, “Anterior Cervical Plate System“, “Posterior Cervical System” and “Corpectomy Mesh System. We present our innovative implants, surgical instruments and set structures that exist in Spinal Systems in our catalog to our valued business partners and users.

CERVICAL SYSTEM



CERVICAL CAGE



CERVICAL CAGE

The Cervical Cage is made of Peek and Titanium material, compatible with MRI and CT. It does not allow any lesion problems. It was implanted from the anterior approach using the Smith-Robinson technique. Thanks to the Octagonal surface feature, which facilitates a strong fixation by the superior and inferior area, any additional implantation

it is not necessary as a plate. Determination of the appropriate size through experiments and implantation with a single instrument offer an easy application and time-saving advantage to the user.

- * Areas where the corpus of the cage is to hold and makes it easy to get in contact with serrated
- * The cages are perforated and designed to be filled with bone grafts.
- * The large contact surface of the cage prevents crashes and Corpus
- * There are different cage sizes for anatomy. The of the cage; it is between 4 mm and 10 mm

STERILE CERVICAL CAGES



Product Name	Reference Number
BIOMECH CERVICAL INTERBODY CAGE, RIGID, PEEK 4,0X14X12 MM	1000.0401412
BIOMECH CERVICAL INTERBODY CAGE, RIGID, PEEK 4,0X16X14 MM	1000.0401614
BIOMECH CERVICAL INTERBODY CAGE, RIGID, PEEK 5,0X14X12 MM	1000.0501412
BIOMECH CERVICAL INTERBODY CAGE, RIGID, PEEK 5,0X16X14 MM	1000.0501614
BIOMECH CERVICAL INTERBODY CAGE, RIGID, PEEK 6,0X14X12 MM	1000.0601412
BIOMECH CERVICAL INTERBODY CAGE, RIGID, PEEK 6,0X16X14 MM	1000.0601614
BIOMECH CERVICAL INTERBODY CAGE, RIGID, PEEK 7,0X14X12 MM	1000.0701412
BIOMECH CERVICAL INTERBODY CAGE, RIGID, PEEK 7,0X16X14 MM	1000.0701614
BIOMECH CERVICAL INTERBODY CAGE, RIGID, PEEK 8,0X14X12 MM	1000.0801412
BIOMECH CERVICAL INTERBODY CAGE, RIGID, PEEK 8,0X16X14 MM	1000.0801614
BIOMECH CERVICAL INTERBODY CAGE, RIGID, PEEK 9,0X14X12 MM	1000.0901412
BIOMECH CERVICAL INTERBODY CAGE, RIGID, PEEK 9,0X16X14 MM	1000.0901614
BIOMECH CERVICAL INTERBODY CAGE, RIGID, PEEK 10,0X14X12 MM	1000.1001412
BIOMECH CERVICAL INTERBODY CAGE, RIGID, PEEK 10,0X16X14 MM	1000.1001614



Product Name	Reference Number
BIOMECH CERVICAL INTERBODY CAGE, EXPANDABLE(POSTERIOR), PEEK 4,0X14X12 MM	1002.0401412
BIOMECH CERVICAL INTERBODY CAGE, EXPANDABLE(POSTERIOR), PEEK 4,0X16X14 MM	1002.0401614
BIOMECH CERVICAL INTERBODY CAGE, EXPANDABLE(POSTERIOR), PEEK 5,0X14X12 MM	1002.0501614
BIOMECH CERVICAL INTERBODY CAGE, EXPANDABLE(POSTERIOR), PEEK 5,0X16X14 MM	1002.0551412
BIOMECH CERVICAL INTERBODY CAGE, EXPANDABLE(POSTERIOR), PEEK 6,0X14X12 MM	1002.0601412
BIOMECH CERVICAL INTERBODY CAGE, EXPANDABLE(POSTERIOR), PEEK 6,0X16X14 MM	1002.0601614
BIOMECH CERVICAL INTERBODY CAGE, EXPANDABLE(POSTERIOR), PEEK 7,0X14X12 MM	1002.0701412
BIOMECH CERVICAL INTERBODY CAGE, EXPANDABLE(POSTERIOR), PEEK 7,0X16X14 MM	100.001614
BIOMECH CERVICAL INTERBODY CAGE, EXPANDABLE(POSTERIOR), PEEK 8,0X14X12 MM	1002.0801412
BIOMECH CERVICAL INTERBODY CAGE, EXPANDABLE(POSTERIOR), PEEK 8,0X16X14 MM	1002.0801614
BIOMECH CERVICAL INTERBODY CAGE, EXPANDABLE(POSTERIOR), PEEK 9,0X14X12 MM	1002.0901412
BIOMECH CERVICAL INTERBODY CAGE, EXPANDABLE(POSTERIOR), PEEK 9,0X16X14 MM	1002.0901614
BIOMECH CERVICAL INTERBODY CAGE, EXPANDABLE(POSTERIOR), PEEK 10,0X14X12 MM	1002.1001412
BIOMECH CERVICAL INTERBODY CAGE, EXPANDABLE(POSTERIOR), PEEK 10,0X16X14 MM	1002.1001614



Product Name	Reference Number
BIOMECH CERVICAL INTERBODY CAGE, RIGID, TITANIUM 4,0X14X12 MM	1001.0401412
BIOMECH CERVICAL INTERBODY CAGE, RIGID, TITANIUM 4,0X16X14 MM	1001.0401614
BIOMECH CERVICAL INTERBODY CAGE, RIGID, TITANIUM 5,0X14X12 MM	1001.0501412
BIOMECH CERVICAL INTERBODY CAGE, RIGID, TITANIUM 5,0X16X14 MM	1001.0501614
BIOMECH CERVICAL INTERBODY CAGE, RIGID, TITANIUM 6,0X14X12 MM	1001.0601412
BIOMECH CERVICAL INTERBODY CAGE, RIGID, TITANIUM 6,0X16X14 MM	1001.0601614
BIOMECH CERVICAL INTERBODY CAGE, RIGID, TITANIUM 7,0X14X12 MM	1000.0701412
BIOMECH CERVICAL INTERBODY CAGE, RIGID, TITANIUM 7,0X16X14 MM	1000.0701614
BIOMECH CERVICAL INTERBODY CAGE, RIGID, TITANIUM 8,0X14X12 MM	1001.0801412
BIOMECH CERVICAL INTERBODY CAGE, RIGID, TITANIUM 8,0X16X14 MM	1001.0801614
BIOMECH CERVICAL INTERBODY CAGE, RIGID, TITANIUM 9,0X14X12 MM	1001.0901412
BIOMECH CERVICAL INTERBODY CAGE, RIGID, TITANIUM 9,0X16X14 MM	1001.0901614
BIOMECH CERVICAL INTERBODY CAGE, RIGID, TITANIUM 10,0X14X12 MM	1001.1001412
BIOMECH CERVICAL INTERBODY CAGE, RIGID, TITANIUM 10,0X16X14 MM	1001.1001614



Product Name	Reference Number
BIOMECH CERVICAL INTERBODY CAGE, RIGID, PEEK,WITH TITANIUM BLADE 4,0X14X12 MM	1003.0401412
BIOMECH CERVICAL INTERBODY CAGE, RIGID, PEEK,WITH TITANIUM BLADE 4,0X16X14 MM	1003.0401614
BIOMECH CERVICAL INTERBODY CAGE, RIGID, PEEK,WITH TITANIUM BLADE 5,0X14X12 MM	1003.0501412
BIOMECH CERVICAL INTERBODY CAGE, RIGID, PEEK,WITH TITANIUM BLADE 5,0X16X14 MM	1003.0501614
BIOMECH CERVICAL INTERBODY CAGE, RIGID, PEEK,WITH TITANIUM BLADE 6,0X14X12 MM	1003.0601412
BIOMECH CERVICAL INTERBODY CAGE, RIGID, PEEK,WITH TITANIUM BLADE 6,0X16X14 MM	1003.0601614
BIOMECH CERVICAL INTERBODY CAGE, RIGID, PEEK,WITH TITANIUM BLADE 7,0X14X12 MM	1003.0701412
BIOMECH CERVICAL INTERBODY CAGE, RIGID, PEEK,WITH TITANIUM BLADE 7,0X16X14 MM	1003.0701614
BIOMECH CERVICAL INTERBODY CAGE, RIGID, PEEK,WITH TITANIUM BLADE 8,0X14X12 MM	1003.0801412
BIOMECH CERVICAL INTERBODY CAGE, RIGID, PEEK,WITH TITANIUM BLADE 8,0X16X14 MM	1003.0801614
BIOMECH CERVICAL INTERBODY CAGE, RIGID, PEEK,WITH TITANIUM BLADE 9,0X14X12 MM	1003.0901412
BIOMECH CERVICAL INTERBODY CAGE, RIGID, PEEK,WITH TITANIUM BLADE 9,0X16X14 MM	1003.0901614
BIOMECH CERVICAL INTERBODY CAGE, RIGID, PEEK,WITH TITANIUM BLADE 10,0X14X12 MM	1003.1001412
BIOMECH CERVICAL INTERBODY CAGE, RIGID, PEEK,WITH TITANIUM BLADE 10,0X16X14 MM	1003.1001614

STERILE CAGE,EXPANDABLE(ANTERIOR), PEEK



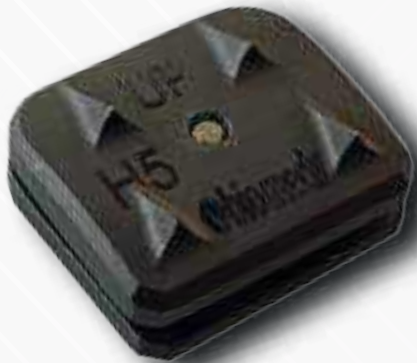
Product Name	Reference Number
BIOMECH CERVICAL INTERBODY CAGE,EXPANDABLE(ANTERIOR), PEEK, 4,0X14X12 MM	1008.0401412
BIOMECH CERVICAL INTERBODY CAGE,EXPANDABLE(ANTERIOR), PEEK, 4,0X16X14 MM	1008.0401614
BIOMECH CERVICAL INTERBODY CAGE,EXPANDABLE(ANTERIOR), PEEK, 4,5X14X12 MM	1008.0451412
BIOMECH CERVICAL INTERBODY CAGE,EXPANDABLE(ANTERIOR), PEEK, 4,5X16X14 MM	1008.0451614
BIOMECH CERVICAL INTERBODY CAGE,EXPANDABLE(ANTERIOR), PEEK, 5,0X14X12 MM	1008.0501412
BIOMECH CERVICAL INTERBODY CAGE,EXPANDABLE(ANTERIOR), PEEK, 5,0X16X14 MM	1008.0501614
BIOMECH CERVICAL INTERBODY CAGE,EXPANDABLE(ANTERIOR), PEEK, 5,5X14X12 MM	1008.0551412
BIOMECH CERVICAL INTERBODY CAGE,EXPANDABLE(ANTERIOR), PEEK, 5,5X16X14 MM	1008.0551614
BIOMECH CERVICAL INTERBODY CAGE,EXPANDABLE(ANTERIOR), PEEK, 6,0X14X12 MM	1008.0601412
BIOMECH CERVICAL INTERBODY CAGE,EXPANDABLE(ANTERIOR), PEEK, 6,0X16X14 MM	1008.0601614
BIOMECH CERVICAL INTERBODY CAGE,EXPANDABLE(ANTERIOR), PEEK, 6,2X14X12 MM	1008.0621412
BIOMECH CERVICAL INTERBODY CAGE,EXPANDABLE(ANTERIOR), PEEK, 6,2X16X14 MM	1008.0621614
BIOMECH CERVICAL INTERBODY CAGE,EXPANDABLE(ANTERIOR), PEEK, 6,5X14X12 MM	1008.0651412
BIOMECH CERVICAL INTERBODY CAGE,EXPANDABLE(ANTERIOR), PEEK, 6,5X16X14 MM	1008.0651614
BIOMECH CERVICAL INTERBODY CAGE,EXPANDABLE(ANTERIOR), PEEK, 7,0X14X12 MM	1008.0701412
BIOMECH CERVICAL INTERBODY CAGE,EXPANDABLE(ANTERIOR), PEEK, 7,0X16X14 MM	1008.0701614
BIOMECH CERVICAL INTERBODY CAGE,EXPANDABLE(ANTERIOR), PEEK, 8,0X14X12 MM	1008.0801412
BIOMECH CERVICAL INTERBODY CAGE,EXPANDABLE(ANTERIOR), PEEK, 8,0X16X14 MM	1008.0801614
BIOMECH CERVICAL INTERBODY CAGE,EXPANDABLE(ANTERIOR), PEEK, 9,0X14X12 MM	1008.0901412
BIOMECH CERVICAL INTERBODY CAGE,EXPANDABLE(ANTERIOR), PEEK, 9,0X16X14 MM	1008.0901614
BIOMECH CERVICAL INTERBODY CAGE,EXPANDABLE(ANTERIOR), PEEK, 10,0X14X12 MM	1008.1001412
BIOMECH CERVICAL INTERBODY CAGE,EXPANDABLE(ANTERIOR), PEEK, 10,0X16X14 MM	1008.1001614

NON-STERILE CAGE,EXPANDABLE(ANTERIOR), PEEK



Product Name	Reference Number
BIOMECH NON-STERILE CERVICAL INTERBODY CAGE,EXPANDABLE(ANTERIOR), PEEK, 4,0X14X12 MM	I008.0401412NS
BIOMECH NON-STERILE CERVICAL INTERBODY CAGE,EXPANDABLE(ANTERIOR), PEEK, 4,0X16X14 MM	I008.0401614NS
BIOMECH NON-STERILE CERVICAL INTERBODY CAGE,EXPANDABLE(ANTERIOR), PEEK, 4,5X14X12 MM	I008.0451412NS
BIOMECH NON-STERILE CERVICAL INTERBODY CAGE,EXPANDABLE(ANTERIOR), PEEK, 4,5X16X14 MM	I008.0451614NS
BIOMECH NON-STERILE CERVICAL INTERBODY CAGE,EXPANDABLE(ANTERIOR), PEEK, 5,0X14X12 MM	I008.0501412NS
BIOMECH NON-STERILE CERVICAL INTERBODY CAGE,EXPANDABLE(ANTERIOR), PEEK, 5,0X16X14 MM	I008.0501614NS
BIOMECH NON-STERILE CERVICAL INTERBODY CAGE,EXPANDABLE(ANTERIOR), PEEK, 5,5X14X12 MM	I008.0551412NS
BIOMECH NON-STERILE CERVICAL INTERBODY CAGE,EXPANDABLE(ANTERIOR), PEEK, 5,5X16X14 MM	I008.0551614NS
BIOMECH NON-STERILE CERVICAL INTERBODY CAGE,EXPANDABLE(ANTERIOR), PEEK, 6,0X14X12 MM	I008.0601412NS
BIOMECH NON-STERILE CERVICAL INTERBODY CAGE,EXPANDABLE(ANTERIOR), PEEK, 6,0X16X14 MM	I008.0601614NS
BIOMECH NON-STERILE CERVICAL INTERBODY CAGE,EXPANDABLE(ANTERIOR), PEEK, 6,2X14X12 MM	I008.0621412NS
BIOMECH NON-STERILE CERVICAL INTERBODY CAGE,EXPANDABLE(ANTERIOR), PEEK, 6,2X16X14 MM	I008.0621614NS
BIOMECH NON-STERILE CERVICAL INTERBODY CAGE,EXPANDABLE(ANTERIOR), PEEK, 6,5X14X12 MM	I008.0651412NS
BIOMECH NON-STERILE CERVICAL INTERBODY CAGE,EXPANDABLE(ANTERIOR), PEEK, 6,5X16X14 MM	I008.0651614NS
BIOMECH NON-STERILE CERVICAL INTERBODY CAGE,EXPANDABLE(ANTERIOR), PEEK, 7,0X14X12 MM	I008.0701412NS
BIOMECH NON-STERILE CERVICAL INTERBODY CAGE,EXPANDABLE(ANTERIOR), PEEK, 7,0X16X14 MM	I008.0701614NS
BIOMECH NON-STERILE CERVICAL INTERBODY CAGE,EXPANDABLE(ANTERIOR), PEEK, 8,0X14X12 MM	I008.0801412NS
BIOMECH NON-STERILE CERVICAL INTERBODY CAGE,EXPANDABLE(ANTERIOR), PEEK, 8,0X16X14 MM	I008.0801614NS
BIOMECH NON-STERILE CERVICAL INTERBODY CAGE,EXPANDABLE(ANTERIOR), PEEK, 9,0X14X12 MM	I008.0901412NS
BIOMECH NON-STERILE CERVICAL INTERBODY CAGE,EXPANDABLE(ANTERIOR), PEEK, 9,0X16X14 MM	I008.0901614NS
BIOMECH NON-STERILE CERVICAL INTERBODY CAGE,EXPANDABLE(ANTERIOR), PEEK, 10,0X14X12 MM	I008.1001412NS
BIOMECH NON-STERILE CERVICAL INTERBODY CAGE,EXPANDABLE(ANTERIOR), PEEK, 10,0X16X14 MM	I008.1001614NS


CERVICAL DISC PROSTHESIS




CERVICAL DISC PROSTHESIS

- Ti-6Al-4V ELI (ISO 5832-3) Titanium Alloy Material
- Anatomical Design
- One Piece Bridge System With High Mobility
- Special Yarn Structure Providing Strong Adhesion
- Special Titanium Sand Blasting and Porous Coating
- Roughening Simple Implantation

NON-STERILE CERVICAL DISC PROSTHESIS



Product Name	Reference Number
LIGAMED CERVICAL DISC PROSTHESIS WITH BLADE (4MM 14mmx12mm)	LIGACDPP 40
LIGAMED CERVICAL DISC PROSTHESIS WITH BLADE (4,5MM 14mmx12mm)	LIGACDPP 45
LIGAMED CERVICAL DISC PROSTHESIS WITH BLADE (5MM 14mmx12mm)	LIGACDPP 50
LIGAMED CERVICAL DISC PROSTHESIS WITH BLADE (5,5MM 14mmx12mm)	LIGACDPP 55
LIGAMED CERVICAL DISC PROSTHESIS WITH BLADE (6MM 14mmx12mm)	LIGACDPP 60
LIGAMED CERVICAL DISC PROSTHESIS WITH BLADE (6,5MM 14mmx12mm)	LIGACDPP 65
LIGAMED CERVICAL DISC PROSTHESIS WITH BLADE (7MM 14mmx12mm)	LIGACDPP 70
LIGAMED CERVICAL DISC PROSTHESIS WITH BLADE (7,5MM 14mmx12mm)	LIGACDPP 75
LIGAMED CERVICAL DISC PROSTHESIS WITH BLADE (8MM 14mmx12mm)	LIGACDPP 80
LIGAMED CERVICAL DISC PROSTHESIS WITH BLADE (8,5MM 14mmx12mm)	LIGACDPP 85
LIGAMED CERVICAL DISC PROSTHESIS WITH BLADE (9MM 14mmx12mm)	LIGACDPP 90
LIGAMED CERVICAL DISC PROSTHESIS WITH BLADE (9,5MM 14mmx12mm)	LIGACDPP 95



Product Name	Reference Number
LIGAMED CERVICAL DISC PROSTHESIS WITH BLADE (4MM 16mmx14mm)	LIGACDPP 140
LIGAMED CERVICAL DISC PROSTHESIS WITH BLADE (4,5MM 16mmx14mm)	LIGACDPP 145
LIGAMED CERVICAL DISC PROSTHESIS WITH BLADE (5MM 16mmx14mm)	LIGACDPP 150
LIGAMED CERVICAL DISC PROSTHESIS WITH BLADE (5,5MM 16mmx14mm)	LIGACDPP 155
LIGAMED CERVICAL DISC PROSTHESIS WITH BLADE (6MM 16mmx14mm)	LIGACDPP 160
LIGAMED CERVICAL DISC PROSTHESIS WITH BLADE (6,5MM 16mmx14mm)	LIGACDPP 165
LIGAMED CERVICAL DISC PROSTHESIS WITH BLADE (7MM 16mmx14mm)	LIGACDPP 170
LIGAMED CERVICAL DISC PROSTHESIS WITH BLADE (7,5MM 16mmx14mm)	LIGACDPP 175
LIGAMED CERVICAL DISC PROSTHESIS WITH BLADE (8MM 16mmx14mm)	LIGACDPP 180
LIGAMED CERVICAL DISC PROSTHESIS WITH BLADE (8,5MM 16mmx14mm)	LIGACDPP 185
LIGAMED CERVICAL DISC PROSTHESIS WITH BLADE (9MM 16mmx14mm)	LIGACDPP 190
LIGAMED CERVICAL DISC PROSTHESIS WITH BLADE (9,5MM 16mmx14mm)	LIGACDPP 195

STERILE CERVICAL DISC PROSTHESIS



Product Name	Reference Number
LIGAMED CERVICAL DISC PROSTHESIS WITH BLADE (4,0MM 14mmx12mm)	RSLIGACDPB 40
LIGAMED CERVICAL DISC PROSTHESIS WITH BLADE (4,5,0MM 14mmx12mm)	RSLIGACDPB 45
LIGAMED CERVICAL DISC PROSTHESIS WITH BLADE (5,0MM 14mmx12mm)	RSLIGACDPB 50
LIGAMED CERVICAL DISC PROSTHESIS WITH BLADE (5,5MM 14mmx12mm)	RSLIGACDPB 55
LIGAMED CERVICAL DISC PROSTHESIS WITH BLADE (6,0MM 14mmx12mm)	RSLIGACDPB 60
LIGAMED CERVICAL DISC PROSTHESIS WITH BLADE (6,5MM 14mmx12mm)	RSLIGACDPB 65
LIGAMED CERVICAL DISC PROSTHESIS WITH BLADE (7,0MM 14mmx12mm)	RSLIGACDPB 70
LIGAMED CERVICAL DISC PROSTHESIS WITH BLADE (7,5MM 14mmx12mm)	RSLIGACDPB 75
LIGAMED CERVICAL DISC PROSTHESIS WITH BLADE (8,0MM 14mmx12mm)	RSLIGACDPB 80
LIGAMED CERVICAL DISC PROSTHESIS WITH BLADE (8,5MM 14mmx12mm)	RSLIGACDPB 85
LIGAMED CERVICAL DISC PROSTHESIS WITH BLADE (9MM 14mmx12mm)	RSLIGACDPB 90



Product Name	Reference Number
LIGAMED CERVICAL DISC PROSTHESIS WITH BLADE (4,0MM 16mmx14mm)	RSLIGACDPB 140
LIGAMED CERVICAL DISC PROSTHESIS WITH BLADE (4,50MM16mmx14mm)	RSLIGACDPB 145
LIGAMED CERVICAL DISC PROSTHESIS WITH BLADE (5,0MM 16mmx14mm)	RSLIGACDPB 150
LIGAMED CERVICAL DISC PROSTHESIS WITH BLADE (5,5MM 16mmx14mm)	RSLIGACDPB 155
LIGAMED CERVICAL DISC PROSTHESIS WITH BLADE (6,0MM 16mmx14mm)	RSLIGACDPB 160
LIGAMED CERVICAL DISC PROSTHESIS WITH BLADE (6,5MM 16mmx14mm)	RSLIGACDPB 165
LIGAMED CERVICAL DISC PROSTHESIS WITH BLADE (7,0MM 16mmx14mm)	RSLIGACDPB 170
LIGAMED CERVICAL DISC PROSTHESIS WITH BLADE (7,5MM 16mmx14mm)	RSLIGACDPB 175
LIGAMED CERVICAL DISC PROSTHESIS WITH BLADE (8,0MM 16mmx14mm)	RSLIGACDPB 180
LIGAMED CERVICAL DISC PROSTHESIS WITH BLADE (8,5MM 16mmx14mm)	RSLIGACDPB 185
LIGAMED CERVICAL DISC PROSTHESIS WITH BLADE (9MM 16mmx14mm)	RSLIGACDPB 190

CERVICAL CAGE WITH PLATE

The Cervical Cage is made of and Titanium material, compatible with MRI and CT. It does not allow any lesion problems. It was implanted from the anterior approach using the Smith-Robinson technique. Due to the toothed surface feature, which facilitates a strong fixation by the upper and lower area, any additional implantation, such as a plate, is not required. Oct. Determining the appropriate size through trials and implantation with a single instrument offers the user the advantage of an easy application and time savings.

- The areas of the cages in contact with the corpus are serrated and make it easier to hold
- The cages are perforated and designed to be filled with bone grafts.
- The large surface of the cage contacts the corpus and prevents it from collapsing
- There are cage sizes for different anatomies. The dimensions of the cages are between 4 mm and 10 mm Decoupled.



Cervical Cage With Plate

STERILE CAGE, RIGID, PEEK, WITH TITANIUM PLATE



Product Name	Reference Number
BIOMECH CERVICAL INTERBODY CAGE, RIGID, PEEK, WITH TITANIUM PLATE 4,0X14X12 MM	1007.0401412
BIOMECH CERVICAL INTERBODY CAGE, RIGID, PEEK, WITH TITANIUM PLATE 4,0X16X14 MM	1007.0401614
BIOMECH CERVICAL INTERBODY CAGE, RIGID, PEEK, WITH TITANIUM PLATE 4,5X14X12 MM	1007.0451412
BIOMECH CERVICAL INTERBODY CAGE, RIGID, PEEK, WITH TITANIUM PLATE 4,5X16X14 MM	1007.0451614
BIOMECH CERVICAL INTERBODY CAGE, RIGID, PEEK, WITH TITANIUM PLATE 5,0X14X12 MM	1007.0501412
BIOMECH CERVICAL INTERBODY CAGE, RIGID, PEEK, WITH TITANIUM PLATE 5,0X16X14 MM	1007.0501614
BIOMECH CERVICAL INTERBODY CAGE, RIGID, PEEK, WITH TITANIUM PLATE 5,5X14X12 MM	1007.0551412
BIOMECH CERVICAL INTERBODY CAGE, RIGID, PEEK, WITH TITANIUM PLATE 5,5X16X14 MM	1007.0551614
BIOMECH CERVICAL INTERBODY CAGE, RIGID, PEEK, WITH TITANIUM PLATE 6,0X14X12 MM	1007.0601412
BIOMECH CERVICAL INTERBODY CAGE, RIGID, PEEK, WITH TITANIUM PLATE 6,0X16X14 MM	1007.0601614
BIOMECH CERVICAL INTERBODY CAGE, RIGID, PEEK, WITH TITANIUM PLATE 6,2X14X12 MM	1007.0621412
BIOMECH CERVICAL INTERBODY CAGE, RIGID, PEEK, WITH TITANIUM PLATE 6,2X16X14 MM	1007.0621614
BIOMECH CERVICAL INTERBODY CAGE, RIGID, PEEK, WITH TITANIUM PLATE 6,5X14X12 MM	1007.0651412
BIOMECH CERVICAL INTERBODY CAGE, RIGID, PEEK, WITH TITANIUM PLATE 7,0X14X12 MM	1007.0701412
BIOMECH CERVICAL INTERBODY CAGE, RIGID, PEEK, WITH TITANIUM PLATE 7,0X16X14 MM	1007.0701614
BIOMECH CERVICAL INTERBODY CAGE, RIGID, PEEK, WITH TITANIUM PLATE 8,0X14X12 MM	1007.0801412
BIOMECH CERVICAL INTERBODY CAGE, RIGID, PEEK, WITH TITANIUM PLATE 8,0X16X14 MM	1007.0801614
BIOMECH CERVICAL INTERBODY CAGE, RIGID, PEEK, WITH TITANIUM PLATE 9,0X14X12 MM	1007.0901412
BIOMECH CERVICAL INTERBODY CAGE, RIGID, PEEK, WITH TITANIUM PLATE 9,0X16X14 MM	1007.0901614
BIOMECH CERVICAL INTERBODY CAGE, RIGID, PEEK, WITH TITANIUM PLATE 10,0X14X12 MM	1007.1001412
BIOMECH CERVICAL INTERBODY CAGE, RIGID, PEEK, WITH TITANIUM PLATE 10,0X16X14 MM	1007.1001614

NON-STERILE CAGE, RIGID, PEEK, WITH TITANIUM PLATE



Product Name	Reference Number
BIOMECH NON-STERILE CERVICAL INTERBODY CAGE, RIGID, PEEK, WITH TITANIUM PLATE 4,0X14X12 MM	1007.0401412NS
BIOMECH NON-STERILE CERVICAL INTERBODY CAGE, RIGID, PEEK, WITH TITANIUM PLATE 4,0X16X14 MM	1007.0401614NS
BIOMECH NON-STERILE CERVICAL INTERBODY CAGE, RIGID, PEEK, WITH TITANIUM PLATE 4,5X14X12 MM	1007.0451412NS
BIOMECH NON-STERILE CERVICAL INTERBODY CAGE, RIGID, PEEK, WITH TITANIUM PLATE 4,5X16X14 MM	1007.0451614NS
BIOMECH NON-STERILE CERVICAL INTERBODY CAGE, RIGID, PEEK, WITH TITANIUM PLATE 5,0X14X12 MM	1007.0501412NS
BIOMECH NON-STERILE CERVICAL INTERBODY CAGE, RIGID, PEEK, WITH TITANIUM PLATE 5,0X16X14 MM	1007.0501614NS
BIOMECH NON-STERILE CERVICAL INTERBODY CAGE, RIGID, PEEK, WITH TITANIUM PLATE 5,5X14X12 MM	1007.0551412NS
BIOMECH NON-STERILE CERVICAL INTERBODY CAGE, RIGID, PEEK, WITH TITANIUM PLATE 5,5X16X14 MM	1007.0551614NS
BIOMECH NON-STERILE CERVICAL INTERBODY CAGE, RIGID, PEEK, WITH TITANIUM PLATE 6,0X14X12 MM	1007.0601412NS
BIOMECH NON-STERILE CERVICAL INTERBODY CAGE, RIGID, PEEK, WITH TITANIUM PLATE 6,0X16X14 MM	1007.0601614NS
BIOMECH NON-STERILE CERVICAL INTERBODY CAGE, RIGID, PEEK, WITH TITANIUM PLATE 6,2X14X12 MM	1007.0621412NS
BIOMECH NON-STERILE CERVICAL INTERBODY CAGE, RIGID, PEEK, WITH TITANIUM PLATE 6,2X16X14 MM	1007.0621614NS
BIOMECH NON-STERILE CERVICAL INTERBODY CAGE, RIGID, PEEK, WITH TITANIUM PLATE 6,5X14X12 MM	1007.0651412NS
BIOMECH NON-STERILE CERVICAL INTERBODY CAGE, RIGID, PEEK, WITH TITANIUM PLATE 6,5X16X14 MM	1007.0651614NS
BIOMECH NON-STERILE CERVICAL INTERBODY CAGE, RIGID, PEEK, WITH TITANIUM PLATE 7,0X14X12 MM	1007.0701412NS
BIOMECH NON-STERILE CERVICAL INTERBODY CAGE, RIGID, PEEK, WITH TITANIUM PLATE 7,0X16X14 MM	1007.0701614NS
BIOMECH NON-STERILE CERVICAL INTERBODY CAGE, RIGID, PEEK, WITH TITANIUM PLATE 8,0X14X12 MM	1007.0801412NS
BIOMECH NON-STERILE CERVICAL INTERBODY CAGE, RIGID, PEEK, WITH TITANIUM PLATE 8,0X16X14 MM	1007.0801614NS
BIOMECH NON-STERILE CERVICAL INTERBODY CAGE, RIGID, PEEK, WITH TITANIUM PLATE 9,0X14X12 MM	1007.0901412NS
BIOMECH NON-STERILE CERVICAL INTERBODY CAGE, RIGID, PEEK, WITH TITANIUM PLATE 9,0X16X14 MM	1007.0901614NS
BIOMECH NON-STERILE CERVICAL INTERBODY CAGE, RIGID, PEEK, WITH TITANIUM PLATE 10,0X14X12 MM	1007.1001412NS
BIOMECH NON-STERILE CERVICAL INTERBODY CAGE, RIGID, PEEK, WITH TITANIUM PLATE 10,0X16X14 MM	1007.1001614NS

ANTERIOR CERVICAL PLATE - SCREW SYSTEM

Anterior Cervical Plate System consists of mobile and fixed safety screws, plate which provides high strength with low thickness, screws of mobile and fixed bone anchorage.

Blocking system that avoids the anteropulsion of screws are compatible and effective with the plate. The mobile safety screws allow poliaxial angulation of 15°. The fixed safety screws are placed perpendicularly to the plate in order to obtain more solid fixings. The ionically anodized surface avoids friction wearing out and boosts resistance to fatigue. The rounded peripheral rim lowers the aggressiveness of the implant over soft tissues. It provides effective and simple use.

- Improved intraoperative application and various dimension options
- Low profile design with specially designed screw locking
- It has a slim outer appearance (2 mm)
- The size range of the plates is from 14 mm to 100 mm
- There are screws with diameters of 4 mm and 4.5 mm
- Screw lengths vary between 6 mm and 20 mm
- Structure easy to apply.

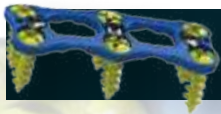


NON-STERILE ANTERIOR CERVICAL PLATE



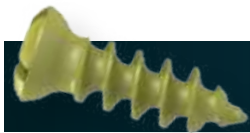
Product Name	Reference Number
BIOMECH ANTERIOR CERVICAL PLATE (14 MM-2MM-22MM) (1 LEVEL)	1009.0000014
BIOMECH ANTERIOR CERVICAL PLATE (16 MM-2MM-24MM)(1 LEVEL)	1009.0000016
BIOMECH ANTERIOR CERVICAL PLATE (18 MM-2MM-26MM) (1 LEVEL)	1009.0000018
BIOMECH ANTERIOR CERVICAL PLATE (20 MM-2MM-28MM) (1 LEVEL)	1009.0000020
BIOMECH ANTERIOR CERVICAL PLATE (24 MM-2MM-32MM)(1 LEVEL)	1009.0000024
BIOMECH ANTERIOR CERVICAL PLATE (28 MM-2MM-36MM) (2 LEVEL)	1009.0000028
BIOMECH ANTERIOR CERVICAL PLATE (30 MM-2MM-38MM) (2 LEVEL)	1009.0000030
BIOMECH ANTERIOR CERVICAL PLATE (32MM-2MM- 40MM) (2 LEVEL)	1009.0000032
BIOMECH ANTERIOR CERVICAL PLATE (34 MM-2MM-42MM) (2 LEVEL)	1009.0000034
BIOMECH ANTERIOR CERVICAL PLATE (36 MM-2MM-44MM)(2 LEVEL)	1009.0000036
BIOMECH ANTERIOR CERVICAL PLATE (40 MM-2MM-48MM)(2 LEVEL)	1009.0000040
BIOMECH ANTERIOR CERVICAL PLATE (44 MM-2MM-52MM)(2 LEVEL)	1009.0000044
BIOMECH ANTERIOR CERVICAL PLATE (48 MM-2MM-56MM)(3 LEVEL)	1009.0000048
BIOMECH ANTERIOR CERVICAL PLATE (51 MM-2MM-59MM) (3 LEVEL)	1009.0000051

NON-STERILE ANTERIOR CERVICAL PLATE



Product Name	Reference Number
BIOMECH ANTERIOR CERVICAL PLATE (54 MM-2MM-62MM) (3 LEVEL)	1009.0000054
BIOMECH ANTERIOR CERVICAL PLATE (57 MM-2MM-65MM) (3 LEVEL)	1009.0000057
BIOMECH ANTERIOR CERVICAL PLATE (60 MM-2MM-68MM)(3 LEVEL)	1009.0000060
BIOMECH ANTERIOR CERVICAL PLATE (63 MM-2MM-71MM) (3 LEVEL)	1009.0000063
BIOMECH ANTERIOR CERVICAL PLATE (66 MM-2MM-74MM)(3 LEVEL)	1009.0000066
BIOMECH ANTERIOR CERVICAL PLATE (68 MM-2MM-76MM) (4 LEVEL)	1009.0000068
BIOMECH ANTERIOR CERVICAL PLATE (69 MM-2MM-77MM) (4 LEVEL)	1009.0000069
BIOMECH ANTERIOR CERVICAL PLATE (72 MM-2MM-80MM) (4 LEVEL)	1009.0000072
BIOMECH ANTERIOR CERVICAL PLATE (76 MM-2MM-84MM)(4 LEVEL)	1009.0000076
BIOMECH ANTERIOR CERVICAL PLATE (80 MM-2MM-88MM) (4 LEVEL)	1009.0000080
BIOMECH ANTERIOR CERVICAL PLATE (84 MM-2MM-92MM) (4 LEVEL)	1009.0000084
BIOMECH ANTERIOR CERVICAL PLATE (88 MM-2MM-96MM) (4 LEVEL)	1009.0000088
BIOMECH ANTERIOR CERVICAL PLATE (92 MM-2MM-100MM) (4 LEVEL)	1009.0000092
BIOMECH ANTERIOR CERVICAL PLATE (96 MM-2MM-104MM) (4 LEVEL)	1009.0000096
BIOMECH ANTERIOR CERVICAL PLATE 100 MM-2MM-108MM)(4 LEVEL)	1009.0000100

NON-STERILE ANTERIOR CERVICAL SCREW



Product Name	Reference Number
BIOMECH ANTERIOR CERVICAL SCREW Ø 4.0X12 MM	1010.0004012
BIOMECH ANTERIOR CERVICAL SCREW Ø 4.0X14 MM	1010.0004014
BIOMECH ANTERIOR CERVICAL SCREW Ø 4.0X16 MM	1010.0004016
BIOMECH ANTERIOR CERVICAL SCREW Ø 4.0X18 MM	1010.0004018
BIOMECH ANTERIOR CERVICAL SCREW Ø 4.0X20 MM	1010.0004020
BIOMECH ANTERIOR CERVICAL SCREW Ø 4.5X12 MM	1010.0004512
BIOMECH ANTERIOR CERVICAL SCREW Ø 4.5X14 MM	1010.0004514
BIOMECH ANTERIOR CERVICAL SCREW Ø 4.5X16 MM	1010.0004516
BIOMECH ANTERIOR CERVICAL SCREW Ø 4.5X18 MM	1010.0004518
BIOMECH ANTERIOR CERVICAL SCREW Ø 4.5X20 MM	1010.0004520

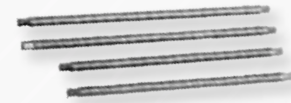
POSTERIOR CERVICAL STABILIZATION SYSTEM SCREW-ROD-CONNECTOR-DOMINO

Posterior Cervical Fusion is a procedure intended for the stabilization of the cervical spine through a posterior approach. The procedure is commonly performed using hooks, plates, screws and rods as an adjunct to the fusion. Posterior Cervical Fusion is performed to treat instabilities which arise from: degenerative disc disease, spondylolisthesis, spinal stenosis, fracture/dislocation, atlantoaxial fractures with instability, occipito-cervical dislocation, revisions of previous cervical spine surgery and tumors. Posterior Cervical System is an enhanced set of instruments and implants, including variable size screws, hooks, connectors, domino and rods, designed for posterior stabilization of the upper spine. These implants provide the flexibility required to accommodate variations in patient anatomy.

- Completely compatible with the cervical anatomy
- Low profile design and special designed screw locking
- Color anodizing for specifying the different screw diameters
- Suitable lengths and diameters for each level (Many alternative size)
- There are screws with diameters of 3.5 mm and 4.0 mm
- Posterior Cervical System uses 3.5 mm titanium alloy rods.
- Structure easy to apply



Posterior Cervical
Polyaxial Screw



Posterior Cervical Rod



Posterior Cervical
Transverse Connector



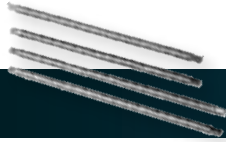
Posterior Cervical Domino



NON-STERILE POSTERIOR CERVICAL POLYAXIAL SCREW

Product Name	Reference Number
BIOMECH POSTERIOR CERVICAL POLYAXIAL SCREW Ø 3.5X10 MM	1011.0003510
BIOMECH POSTERIOR CERVICAL POLYAXIAL SCREW Ø 3.5X12 MM	1011.0003512
BIOMECH POSTERIOR CERVICAL POLYAXIAL SCREW Ø 3.5X14 MM	1011.0003514
BIOMECH POSTERIOR CERVICAL POLYAXIAL SCREW Ø 3.5X16 MM	1011.0003516
BIOMECH POSTERIOR CERVICAL POLYAXIAL SCREW Ø 3.5X18 MM	1011.0003518
BIOMECH POSTERIOR CERVICAL POLYAXIAL SCREW Ø 3.5X20 MM	1011.0003520
BIOMECH POSTERIOR CERVICAL POLYAXIAL SCREW Ø 3.5X22 MM	1011.0003522
BIOMECH POSTERIOR CERVICAL POLYAXIAL SCREW Ø 3.5X24 MM	1011.0003524
BIOMECH POSTERIOR CERVICAL POLYAXIAL SCREW Ø 3.5X26 MM	1011.0003526
BIOMECH POSTERIOR CERVICAL POLYAXIAL SCREW Ø 3.5X28 MM	1011.0003528
BIOMECH POSTERIOR CERVICAL POLYAXIAL SCREW Ø 3.5X30 MM	1011.0003530
BIOMECH POSTERIOR CERVICAL POLYAXIAL SCREW Ø 4.0X10 MM	1011.0004010
BIOMECH POSTERIOR CERVICAL POLYAXIAL SCREW Ø 4.0X12 MM	1011.0004012
BIOMECH POSTERIOR CERVICAL POLYAXIAL SCREW Ø 4.0X14 MM	1011.0004014
BIOMECH POSTERIOR CERVICAL POLYAXIAL SCREW Ø 4.0X16 MM	1011.0004016
BIOMECH POSTERIOR CERVICAL POLYAXIAL SCREW Ø 4.0X18 MM	1011.0004018
BIOMECH POSTERIOR CERVICAL POLYAXIAL SCREW Ø 4.0X20 MM	1011.0004020
BIOMECH POSTERIOR CERVICAL POLYAXIAL SCREW Ø 4.0X22 MM	1011.0004022
BIOMECH POSTERIOR CERVICAL POLYAXIAL SCREW Ø 4.0X24 MM	1011.0004024
BIOMECH POSTERIOR CERVICAL POLYAXIAL SCREW Ø 4.0X26 MM	1011.0004026
BIOMECH POSTERIOR CERVICAL POLYAXIAL SCREW Ø 4.0X28 MM	1011.0004028
BIOMECH POSTERIOR CERVICAL POLYAXIAL SCREW Ø 4.0X30 MM	1011.0004030

NON-STERILE POSTERIOR CERVICAL ROD



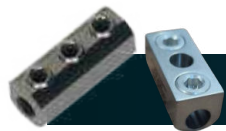
Product Name	Reference Number
BIOMECH POSTERIOR CERVICAL ROD 35-20 MM	1012.0035020
BIOMECH POSTERIOR CERVICAL ROD 35-25 MM	1012.0035025
BIOMECH POSTERIOR CERVICAL ROD 35-30 MM	1012.0035030
BIOMECH POSTERIOR CERVICAL ROD 35-35 MM	1012.0035035
BIOMECH POSTERIOR CERVICAL ROD 35-40 MM	1012.0035040
BIOMECH POSTERIOR CERVICAL ROD 35-45 MM	1012.0035045
BIOMECH POSTERIOR CERVICAL ROD 35-50 MM	1012.0035050
BIOMECH POSTERIOR CERVICAL ROD 35-55 MM	1012.0035055
BIOMECH POSTERIOR CERVICAL ROD 35-60 MM	1012.0035060
BIOMECH POSTERIOR CERVICAL ROD 35-65 MM	1012.0035065
BIOMECH POSTERIOR CERVICAL ROD 35-70 MM	1012.0035070
BIOMECH POSTERIOR CERVICAL ROD 35-75 MM	1012.0035075
BIOMECH POSTERIOR CERVICAL ROD 35-80 MM	1012.0035080
BIOMECH POSTERIOR CERVICAL ROD 35-85 MM	1012.0035085
BIOMECH POSTERIOR CERVICAL ROD 35-90 MM	1012.0035090
BIOMECH POSTERIOR CERVICAL ROD 35-95 MM	1012.0035095
BIOMECH POSTERIOR CERVICAL ROD 35-100 MM	1012.0035100
BIOMECH POSTERIOR CERVICAL ROD 35-105 MM	1012.0035105
BIOMECH POSTERIOR CERVICAL ROD 35-110 MM	1012.0035110
BIOMECH POSTERIOR CERVICAL ROD 35-115 MM	1012.0035115
BIOMECH POSTERIOR CERVICAL ROD 35-120 MM	1012.0035120
BIOMECH POSTERIOR CERVICAL ROD 35-125 MM	1012.0035125
BIOMECH POSTERIOR CERVICAL ROD 35-130 MM	1012.0035130
BIOMECH POSTERIOR CERVICAL ROD 35-135 MM	1012.0035135
BIOMECH POSTERIOR CERVICAL ROD 35-140 MM	1012.0035140
BIOMECH POSTERIOR CERVICAL ROD 35-145 MM	1012.0035145
BIOMECH POSTERIOR CERVICAL ROD 35-150 MM	1012.0035150

NON-STERILE CERVICAL TRANSVERSE CONNECTOR



Product Name	Reference Number
BIOMECH POSTERIOR CERVICAL TRANSVERSE CONNECTOR 10MM	1014.0000010
BIOMECH POSTERIOR CERVICAL TRANSVERSE CONNECTOR 20MM	1014.0000020
BIOMECH POSTERIOR CERVICAL TRANSVERSE CONNECTOR 30MM	1014.0000030
BIOMECH POSTERIOR CERVICAL TRANSVERSE CONNECTOR 40MM	1014.0000040
BIOMECH POSTERIOR CERVICAL TRANSVERSE CONNECTOR 50MM	1014.0000050
BIOMECH POSTERIOR CERVICAL TRANSVERSE CONNECTOR 60MM	1014.0000060
BIOMECH POSTERIOR CERVICAL TRANSVERSE CONNECTOR 70MM	1014.0000070

NON-STERILE CERVICAL DOMINO



Product Name	Reference Number
BIOMECH POSTERIOR CERVICAL DOMINO(ONE SIDE) (Ø3,5MM)	1015.0000001
BIOMECH POSTERIOR CERVICAL DOMINO(DOUBLE SIDE) (Ø3,5MM-Ø3,5MM)	1015.0000002
BIOMECH POSTERIOR CERVICAL DOMINO(DOUBLE SIDE) (Ø3,5MM-Ø5,5MM)	1015.0000003
BIOMECH POSTERIOR CERVICAL DOMINO(DOUBLE SIDE) (Ø3,5MM-Ø6,0MM)	1015.0000004

POSTERIOR CERVICAL STABILIZATION SYSTEM CONNECTORS OCCIPITAL PLATE-HOOK

Lateral Connector

- Accommodates rod attachment of non-linear screws
- Allows for increased angle of screw trajectory
- Accounts for screw height differences



Hooks

There are five hook options: Pedicle Hooks, Laminar Hooks, Poliaxial Hooks, Offset Hooks, Transverse Hooks



Laminar Hook



Pedicle Hook

Occipital Plate

Is intended is intended to provide stabilization as an adjunct to fusion of the cervical spine and occipito-cervicothoracic junction for the following indications: degenerative disc disease (neck pain of discogenic origin with degeneration of the disc, spondylolisthesis, spinal Osteosis, fracture/dislocation, atlanto-axial fracture with instability, occipito-cervical dislocation, revision of previous cervical spine fusion surgery and tumors.

The Occipital plate includes a complete set of implants and instruments designed to optimize fixation to the occiput and easily connect with all posterior cervical and thoracic rod-screw systems.



Occipital Screw



Occipital Plate-Rod



Occipital Plate Straight



Occipital Plate

CERVICAL OCCIPITAL PLATE / SCREW



Product Name	Reference Number
BIOMECH POSTERIOR CERVICAL OCCIPITAL PLATE (S)	1016.0000001
BIOMECH POSTERIOR CERVICAL OCCIPITAL PLATE (M)	1016.0000002
BIOMECH POSTERIOR CERVICAL OCCIPITAL PLATE (L)	1016.0000003



Product Name	Reference Number
BIOMECH POSTERIOR CERVICAL OCCIPITAL PLATE (2 HOLES)	1016.1000002
BIOMECH POSTERIOR CERVICAL OCCIPITAL PLATE (3 HOLES)	1016.1000003
BIOMECH POSTERIOR CERVICAL OCCIPITAL PLATE (4 HOLES)	1016.1000004
BIOMECH POSTERIOR CERVICAL OCCIPITAL PLATE (5 HOLES)	1016.1000005



Product Name	Reference Number
BIOMECH POSTERIOR CERVICAL OCCIPITAL PLATE SCREW Ø 4.0X6 MM	1017.0004006
BIOMECH POSTERIOR CERVICAL OCCIPITAL PLATE SCREW Ø 4.0X8 MM	1017.0004008
BIOMECH POSTERIOR CERVICAL OCCIPITAL PLATE SCREW Ø 4.0X10 MM	1017.0004010
BIOMECH POSTERIOR CERVICAL OCCIPITAL PLATE SCREW Ø 4.0X12 MM	1017.0004012
BIOMECH POSTERIOR CERVICAL OCCIPITAL PLATE SCREW Ø 4.0X14 MM	1017.0004014
BIOMECH POSTERIOR CERVICAL OCCIPITAL PLATE SCREW Ø 4.0X16 MM	1017.0004016
BIOMECH POSTERIOR CERVICAL OCCIPITAL PLATE SCREW Ø 4.0X18 MM	1017.0004018
BIOMECH POSTERIOR CERVICAL OCCIPITAL PLATE SCREW Ø 4.0X20 MM	1017.0004020
BIOMECH POSTERIOR CERVICAL OCCIPITAL PLATE SCREW Ø 4.5X6 MM	1017.0004506
BIOMECH POSTERIOR CERVICAL OCCIPITAL PLATE SCREW Ø 4.5X8 MM	1017.0004508
BIOMECH POSTERIOR CERVICAL OCCIPITAL PLATE SCREW Ø 4.5X10 MM	1017.0004510
BIOMECH POSTERIOR CERVICAL OCCIPITAL PLATE SCREW Ø 4.5X12 MM	1017.0004512
BIOMECH POSTERIOR CERVICAL OCCIPITAL PLATE SCREW Ø 4.5X14 MM	1017.0004514
BIOMECH POSTERIOR CERVICAL OCCIPITAL PLATE SCREW Ø 4.5X16 MM	1017.0004516
BIOMECH POSTERIOR CERVICAL OCCIPITAL PLATE SCREW Ø 4.5X18 MM	1017.0004518
BIOMECH POSTERIOR CERVICAL OCCIPITAL PLATE SCREW Ø 4.5X20 MM	1017.0004520

CERVICAL OCCIPITAL PLATE-ROD



Product Name	Reference Number
BIOMECH POSTERIOR CERVICAL OCCIPITAL PLATE-ROD 3 HOLES	1018.0000003
BIOMECH POSTERIOR CERVICAL OCCIPITAL PLATE-ROD 4 HOLES	1018.0000004
BIOMECH POSTERIOR CERVICAL OCCIPITAL PLATE-ROD 5 HOLES	1018.0000005

CERVICAL LAMINAR HOOK TYPE



Product Name	Reference Number
BIOMECH POSTERIOR CERVICAL LAMINAR HOOK TYPE 1	1019.0000001
BIOMECH POSTERIOR CERVICAL LAMINAR HOOK TYPE 2	1019.0000002
BIOMECH POSTERIOR CERVICAL LAMINAR HOOK TYPE 3	1019.0000003
BIOMECH POSTERIOR CERVICAL LAMINAR HOOK TYPE 4	

CERVICAL PEDICUL / OFFSET HOOK



Product Name	Reference Number
BIOMECH POSTERIOR CERVICAL PEDICUL HOOK TYPE 1	1020.0000001
BIOMECH POSTERIOR CERVICAL PEDICUL HOOK TYPE 2	1020.0000002
BIOMECH POSTERIOR CERVICAL PEDICUL HOOK TYPE 3	1020.0000003
BIOMECH POSTERIOR CERVICAL PEDICUL HOOK TYPE 4	1020.0000004



Product Name	Reference Number
BIOMECH POSTERIOR CERVICAL OFFSET HOOK TYPE 1 RIGHT	1021.0000001
BIOMECH POSTERIOR CERVICAL OFFSET HOOK TYPE 2 RIGHT	1021.0000002
BIOMECH POSTERIOR CERVICAL OFFSET HOOK TYPE 3 RIGHT	1021.0000003
BIOMECH POSTERIOR CERVICAL OFFSET HOOK TYPE 4 RIGHT	1021.0000004



Product Name	Reference Number
BIOMECH POSTERIOR CERVICAL OFFSET HOOK TYPE 1 LEFT	1022.0000001
BIOMECH POSTERIOR CERVICAL OFFSET HOOK TYPE 2 LEFT	1022.0000002
BIOMECH POSTERIOR CERVICAL OFFSET HOOK TYPE 3 LEFT	1022.0000003
BIOMECH POSTERIOR CERVICAL OFFSET HOOK TYPE 4 LEFT	1022.0000004

LUMBAR CAGE SYSTEM



POSTERIOR LUMBAR INTERBODY FUSION (PLIF)



PLIF PEEK CAGE



PLIF TITANIUM CAGE



PLIF TITANIUM
EXPANDABLE CAGE



PLIF PEEK EXPANDABLE
CAGE

The Posterior Lumbar Interbody Fusion (PLIF) procedure is intended to stabilize the spine by causing bone to grow between the two vertebral bodies, thus limiting motion at that level. PLIF achieves spinal fusion surgery, typically a pedicle screw construct;

Posterior Lumbar Interbody Fusion Cage is manufactured from peek and Titanium alloy material which is compatible with MRI and CT. Does not allow any lesional problems. It's implanted from posterior approach for following indications:
Mechanical by superior and inferior area. Through it's grafting spaces, it's possible to reach appropriate fusion by grafting technique.

There are cage sizes for different anatomies. The sizes of the cages; it is between 6 mm and 15 mm.

STERILE LUMBAR PLIF CAGE, RIGID, PEEK



Product Name	Reference Number
BIOMECH LUMBAR PLIF CAGE, RIGID, PEEK 25mm-6mm 0°	1100.0025060
BIOMECH LUMBAR PLIF CAGE, RIGID, PEEK 25mm-6mm 5°	1100.0025065
BIOMECH LUMBAR PLIF CAGE, RIGID, PEEK 25mm-6mm 9°	1100.0025069
BIOMECH LUMBAR PLIF CAGE, RIGID, PEEK 25mm-7mm 0°	1100.0025070
BIOMECH LUMBAR PLIF CAGE, RIGID, PEEK 25mm-7mm 5°	1100.0025075
BIOMECH LUMBAR PLIF CAGE, RIGID, PEEK 25mm-7mm 9°	1100.0025079
BIOMECH LUMBAR PLIF CAGE, RIGID, PEEK 25mm-8mm 0°	1100.0025080
BIOMECH LUMBAR PLIF CAGE, RIGID, PEEK 25mm-8mm 5°	1100.0025085
BIOMECH LUMBAR PLIF CAGE, RIGID, PEEK 25mm-8mm 9°	1100.0025089
BIOMECH LUMBAR PLIF CAGE, RIGID, PEEK 25mm-9mm 0°	1100.0025090
BIOMECH LUMBAR PLIF CAGE, RIGID, PEEK 25mm-9mm 5°	1100.0025095
BIOMECH LUMBAR PLIF CAGE, RIGID, PEEK 25mm-9mm 9°	1100.0025099
BIOMECH LUMBAR PLIF CAGE, RIGID, PEEK 25mm-10mm 0°	1100.0025100
BIOMECH LUMBAR PLIF CAGE, RIGID, PEEK 25mm-10mm 5°	1100.0025105
BIOMECH LUMBAR PLIF CAGE, RIGID, PEEK 25mm-10mm 9°	1100.0025109
BIOMECH LUMBAR PLIF CAGE, RIGID, PEEK 25mm-11mm 0°	1100.0025110
BIOMECH LUMBAR PLIF CAGE, RIGID, PEEK 25mm-11mm 5°	1100.0025115
BIOMECH LUMBAR PLIF CAGE, RIGID, PEEK 25mm-11mm 9°	1100.0025119
BIOMECH LUMBAR PLIF CAGE, RIGID, PEEK 25mm-12mm 0°	1100.0025120
BIOMECH LUMBAR PLIF CAGE, RIGID, PEEK 25mm-12mm 5°	1100.0025125
BIOMECH LUMBAR PLIF CAGE, RIGID, PEEK 25mm-12mm 9°	1100.0025129
BIOMECH LUMBAR PLIF CAGE, RIGID, PEEK 25mm-13mm 0°	1100.0025130
BIOMECH LUMBAR PLIF CAGE, RIGID, PEEK 25mm-13mm 5°	1100.0025135
BIOMECH LUMBAR PLIF CAGE, RIGID, PEEK 25mm-13mm 9°	1100.0025139

Product Name	Reference Number
BIOMECH LUMBAR PLIF CAGE, RIGID, PEEK 29mm-6mm 0°	1100.0029060
BIOMECH LUMBAR PLIF CAGE, RIGID, PEEK 29mm-6mm 5°	1100.0029065
BIOMECH LUMBAR PLIF CAGE, RIGID, PEEK 29mm-6mm 9°	1100.0029069
BIOMECH LUMBAR PLIF CAGE, RIGID, PEEK 29mm-7mm 0°	1100.0029070
BIOMECH LUMBAR PLIF CAGE, RIGID, PEEK 29mm-7mm 5°	1100.0029075
BIOMECH LUMBAR PLIF CAGE, RIGID, PEEK 29mm-7mm 9°	1100.0029079
BIOMECH LUMBAR PLIF CAGE, RIGID, PEEK 29mm-8mm 0°	1100.0029080
BIOMECH LUMBAR PLIF CAGE, RIGID, PEEK 29mm-8mm 5°	1100.0029085
BIOMECH LUMBAR PLIF CAGE, RIGID, PEEK 29mm-8mm 9°	1100.0029089
BIOMECH LUMBAR PLIF CAGE, RIGID, PEEK 29mm-9mm 0°	1100.0029090
BIOMECH LUMBAR PLIF CAGE, RIGID, PEEK 29mm-9mm 5°	1100.0029095
BIOMECH LUMBAR PLIF CAGE, RIGID, PEEK 29mm-9mm 9°	1100.0029099
BIOMECH LUMBAR PLIF CAGE, RIGID, PEEK 29mm-10mm 0°	1100.0029100
BIOMECH LUMBAR PLIF CAGE, RIGID, PEEK 29mm-10mm 5°	1100.0029105
BIOMECH LUMBAR PLIF CAGE, RIGID, PEEK 29mm-10mm 9°	1100.0029109
BIOMECH LUMBAR PLIF CAGE, RIGID, PEEK 29mm-11mm 0°	1100.0029110
BIOMECH LUMBAR PLIF CAGE, RIGID, PEEK 29mm-11mm 5°	1100.0029115
BIOMECH LUMBAR PLIF CAGE, RIGID, PEEK 29mm-11mm 9°	1100.0029119
BIOMECH LUMBAR PLIF CAGE, RIGID, PEEK 29mm-12mm 0°	1100.0029120
BIOMECH LUMBAR PLIF CAGE, RIGID, PEEK 29mm-12mm 5°	1100.0029125
BIOMECH LUMBAR PLIF CAGE, RIGID, PEEK 29mm-12mm 9°	1100.0029129
BIOMECH LUMBAR PLIF CAGE, RIGID, PEEK 29mm-13mm 0°	1100.0029130
BIOMECH LUMBAR PLIF CAGE, RIGID, PEEK 29mm-13mm 5°	1100.0029135
BIOMECH LUMBAR PLIF CAGE, RIGID, PEEK 29mm-13mm 9°	1100.0029139

STERILE LUMBAR PLIF CAGE, RIGID, TITANIUM



Product Name	Reference Number
BIOMECH LUMBAR PLIF CAGE, RIGID, TITANIUM 25mm-6mm 0°	1101.0025060
BIOMECH LUMBAR PLIF CAGE, RIGID, TITANIUM 25mm-6mm 5°	1101.0025065
BIOMECH LUMBAR PLIF CAGE, RIGID, TITANIUM 25mm-6mm 9°	1101.0025069
BIOMECH LUMBAR PLIF CAGE, RIGID, TITANIUM 25mm-7mm 0°	1101.0025070
BIOMECH LUMBAR PLIF CAGE, RIGID, TITANIUM 25mm-7mm 5°	1101.0025075
BIOMECH LUMBAR PLIF CAGE, RIGID, TITANIUM 25mm-7mm 9°	1101.0025079
BIOMECH LUMBAR PLIF CAGE, RIGID, TITANIUM 25mm-8mm 0°	1101.0025080
BIOMECH LUMBAR PLIF CAGE, RIGID, TITANIUM 25mm-8mm 5°	1101.0025085
BIOMECH LUMBAR PLIF CAGE, RIGID, TITANIUM 25mm-8mm 9°	1101.0025089
BIOMECH LUMBAR PLIF CAGE, RIGID, TITANIUM 25mm-9mm 0°	1101.0025090
BIOMECH LUMBAR PLIF CAGE, RIGID, TITANIUM 25mm-9mm 5°	1101.0025095
BIOMECH LUMBAR PLIF CAGE, RIGID, TITANIUM 25mm-9mm 9°	1101.0025099
BIOMECH LUMBAR PLIF CAGE, RIGID, TITANIUM 25mm-10mm 0°	1101.0025100
BIOMECH LUMBAR PLIF CAGE, RIGID, TITANIUM 25mm-10mm 5°	1101.0025105
BIOMECH LUMBAR PLIF CAGE, RIGID, TITANIUM 25mm-10mm 9°	1101.0025109
BIOMECH LUMBAR PLIF CAGE, RIGID, TITANIUM 25mm-11mm 0°	1101.0025110
BIOMECH LUMBAR PLIF CAGE, RIGID, TITANIUM 25mm-11mm 5°	1101.0025115
BIOMECH LUMBAR PLIF CAGE, RIGID, TITANIUM 25mm-11mm 9°	1101.0025119
BIOMECH LUMBAR PLIF CAGE, RIGID, TITANIUM 25mm-12mm 0°	1101.0025120
BIOMECH LUMBAR PLIF CAGE, RIGID, TITANIUM 25mm-12mm 5°	1101.0025125
BIOMECH LUMBAR PLIF CAGE, RIGID, TITANIUM 25mm-12mm 9°	1101.0025129
BIOMECH LUMBAR PLIF CAGE, RIGID, TITANIUM 25mm-13mm 0°	1101.0025130
BIOMECH LUMBAR PLIF CAGE, RIGID, TITANIUM 25mm-13mm 5°	1101.0025135
BIOMECH LUMBAR PLIF CAGE, RIGID, TITANIUM 25mm-13mm 9°	1101.0025139

Product Name	Reference Number
BIOMECH LUMBAR PLIF CAGE, RIGID, TITANIUM 29mm-6mm 0°	1101.0029060
BIOMECH LUMBAR PLIF CAGE, RIGID, TITANIUM 29mm-6mm 5°	1101.0029065
BIOMECH LUMBAR PLIF CAGE, RIGID, TITANIUM 29mm-6mm 9°	1101.0029069
BIOMECH LUMBAR PLIF CAGE, RIGID, TITANIUM 29mm-7mm 0°	1101.0029070
BIOMECH LUMBAR PLIF CAGE, RIGID, TITANIUM 29mm-7mm 5°	1101.0029075
BIOMECH LUMBAR PLIF CAGE, RIGID, TITANIUM 29mm-7mm 9°	1101.0029079
BIOMECH LUMBAR PLIF CAGE, RIGID, TITANIUM 29mm-8mm 0°	1101.0029080
BIOMECH LUMBAR PLIF CAGE, RIGID, TITANIUM 29mm-8mm 5°	1101.0029085
BIOMECH LUMBAR PLIF CAGE, RIGID, TITANIUM 29mm-8mm 9°	1101.0029089
BIOMECH LUMBAR PLIF CAGE, RIGID, TITANIUM 29mm-9mm 0°	1101.0029090
BIOMECH LUMBAR PLIF CAGE, RIGID, TITANIUM 29mm-9mm 5°	1101.0029095
BIOMECH LUMBAR PLIF CAGE, RIGID, TITANIUM 29mm-9mm 9°	1101.0029099
BIOMECH LUMBAR PLIF CAGE, RIGID, TITANIUM 29mm-10mm 0°	1101.0029100
BIOMECH LUMBAR PLIF CAGE, RIGID, TITANIUM 29mm-10mm 5°	1101.0029105
BIOMECH LUMBAR PLIF CAGE, RIGID, TITANIUM 29mm-10mm 9°	1101.0029109
BIOMECH LUMBAR PLIF CAGE, RIGID, TITANIUM 29mm-11mm 0°	1101.0029110
BIOMECH LUMBAR PLIF CAGE, RIGID, TITANIUM 29mm-11mm 5°	1101.0029115
BIOMECH LUMBAR PLIF CAGE, RIGID, TITANIUM 29mm-11mm 9°	1101.0029119
BIOMECH LUMBAR PLIF CAGE, RIGID, TITANIUM 29mm-12mm 0°	1101.0029120
BIOMECH LUMBAR PLIF CAGE, RIGID, TITANIUM 29mm-12mm 5°	1101.0029125
BIOMECH LUMBAR PLIF CAGE, RIGID, TITANIUM 29mm-12mm 9°	1101.0029129
BIOMECH LUMBAR PLIF CAGE, RIGID, TITANIUM 29mm-13mm 0°	1101.0029130
BIOMECH LUMBAR PLIF CAGE, RIGID, TITANIUM 29mm-13mm 5°	1101.0029135
BIOMECH LUMBAR PLIF CAGE, RIGID, TITANIUM 29mm-13mm 9°	1101.0029139

STERILE LUMBAR PLIF CAGE, EXPANDABLE, PEEK



Product Name	Reference Number
BIOMECH LUMBAR PLIF CAGE, EXPANDABLE, PEEK 6MM	1102.0000006
BIOMECH LUMBAR PLIF CAGE, EXPANDABLE, PEEK 7 MM	1102.0000007
BIOMECH LUMBAR PLIF CAGE, EXPANDABLE, PEEK 8 MM	1102.0000008
BIOMECH LUMBAR PLIF CAGE, EXPANDABLE, PEEK 9 MM	1102.0000009
BIOMECH LUMBAR PLIF CAGE, EXPANDABLE, PEEK 10 MM	1102.0000010
BIOMECH LUMBAR PLIF CAGE, EXPANDABLE, PEEK 11 MM	1102.0000011
BIOMECH LUMBAR PLIF CAGE, EXPANDABLE, PEEK 12 MM	1102.0000012
BIOMECH LUMBAR PLIF CAGE, EXPANDABLE, PEEK 13 MM	1102.0000013
BIOMECH LUMBAR PLIF CAGE, EXPANDABLE, PEEK 14 MM	1102.0000014
BIOMECH LUMBAR PLIF CAGE, EXPANDABLE, PEEK 15 MM	1102.0000015
BIOMECH LUMBAR PLIF CAGE, EXPANDABLE, PEEK 16 MM	1102.0000016

NON-STERILE LUMBAR PLIF CAGE, EXPANDABLE, PEEK

Product Name	Reference Number
BIOMECH NON-STERILE LUMBAR PLIF CAGE, EXPANDABLE, PEEK 6MM	1102.0000006NS
BIOMECH NON-STERILE LUMBAR PLIF CAGE, EXPANDABLE, PEEK 7 MM	1102.0000007NS
BIOMECH NON-STERILE LUMBAR PLIF CAGE, EXPANDABLE, PEEK 8 MM	1102.0000008NS
BIOMECH NON-STERILE LUMBAR PLIF CAGE, EXPANDABLE, PEEK 9 MM	1102.0000009NS
BIOMECH NON-STERILE LUMBAR PLIF CAGE, EXPANDABLE, PEEK 10 MM	1102.0000010NS
BIOMECH NON-STERILE LUMBAR PLIF CAGE, EXPANDABLE, PEEK 11 MM	1102.0000011NS
BIOMECH NON-STERILE LUMBAR PLIF CAGE, EXPANDABLE, PEEK 12 MM	1102.0000012NS
BIOMECH NON-STERILE LUMBAR PLIF CAGE, EXPANDABLE, PEEK 13 MM	1102.0000013NS
BIOMECH NON-STERILE LUMBAR PLIF CAGE, EXPANDABLE, PEEK 14 MM	1102.0000014NS
BIOMECH NON-STERILE LUMBAR PLIF CAGE, EXPANDABLE, PEEK 15 MM	1102.0000015NS
BIOMECH NON-STERILE LUMBAR PLIF CAGE, EXPANDABLE, PEEK 16 MM	1102.0000016NS

STERILE LUMBAR PLIF CAGE, EXPANDABLE, TITANIUM



Product Name	Reference Number
BIOMECH LUMBAR PLIF CAGE, EXPANDABLE, TITANIUM 6MM	I 103.0000006
BIOMECH LUMBAR PLIF CAGE, EXPANDABLE, TITANIUM 7 MM	I 103.0000007
BIOMECH LUMBAR PLIF CAGE, EXPANDABLE, TITANIUM 8 MM	I 103.0000008
BIOMECH LUMBAR PLIF CAGE, EXPANDABLE, TITANIUM 9 MM	I 103.0000009
BIOMECH LUMBAR PLIF CAGE, EXPANDABLE, TITANIUM 10 MM	I 103.0000010
BIOMECH LUMBAR PLIF CAGE, EXPANDABLE, TITANIUM 11 MM	I 103.0000011
BIOMECH LUMBAR PLIF CAGE, EXPANDABLE, TITANIUM 12 MM	I 103.0000012
BIOMECH LUMBAR PLIF CAGE, EXPANDABLE, TITANIUM 13 MM	I 103.0000013
BIOMECH LUMBAR PLIF CAGE, EXPANDABLE, TITANIUM 14 MM	I 103.0000014
BIOMECH LUMBAR PLIF CAGE, EXPANDABLE, TITANIUM 15 MM	I 103.0000015
BIOMECH LUMBAR PLIF CAGE, EXPANDABLE, TITANIUM 16 MM	I 103.0000016

NON-STERILE LUMBAR PLIF CAGE, EXPANDABLE, TITANIUM

Product Name	Reference Number
BIOMECH NON-STERILE LUMBAR PLIF CAGE, EXPANDABLE, TITANIUM 6MM	I 103.0000006NS
BIOMECH NON-STERILE LUMBAR PLIF CAGE, EXPANDABLE, TITANIUM 7 MM	I 103.0000007NS
BIOMECH NON-STERILE LUMBAR PLIF CAGE, EXPANDABLE, TITANIUM 8 MM	I 103.0000008NS
BIOMECH NON-STERILE LUMBAR PLIF CAGE, EXPANDABLE, TITANIUM 9 MM	I 103.0000009NS
BIOMECH NON-STERILE LUMBAR PLIF CAGE, EXPANDABLE, TITANIUM 10 MM	I 103.0000010NS
BIOMECH NON-STERILE LUMBAR PLIF CAGE, EXPANDABLE, TITANIUM 11 MM	I 103.0000011NS
BIOMECH NON-STERILE LUMBAR PLIF CAGE, EXPANDABLE, TITANIUM 12 MM	I 103.0000012NS
BIOMECH NON-STERILE LUMBAR PLIF CAGE, EXPANDABLE, TITANIUM 13 MM	I 103.0000013NS
BIOMECH NON-STERILE LUMBAR PLIF CAGE, EXPANDABLE, TITANIUM 14 MM	I 103.0000014NS
BIOMECH NON-STERILE LUMBAR PLIF CAGE, EXPANDABLE, TITANIUM 15 MM	I 103.0000015NS
BIOMECH NON-STERILE LUMBAR PLIF CAGE, EXPANDABLE, TITANIUM 16 MM	I 103.0000016NS

TRANSFORAMINAL LUMBAR INTERBODY FUSION (TLIF)

An adaption of the Posterior Lumbar Interbody Fusion (PLIF) procedure, the TLIF technique employs a unilateral approach to the disc space through the intervertebral foramen. Requiring only a partial unilateral facet resection, the TLIF procedure when compared to a PLIF;

- Preserves the laminar arch and contralateral facet
- Avoids bilateral scarring
- Avoids significant dural retraction which may reduce the risk of intraoperative dural tears
- Offers a revision strategy that may not exist with a PLIF due to bilateral scarring

The unique unilateral TLIF approach requires specific implants and instrumentation to facilitate thorough disc space preparation and accurate cage placement.

Transforaminal Lumbar Interbody Fusion is designed as compatible to anatomical constitution at different sizes. It is manufactured from PEEK and Titanium alloy material which is full compatible with body. It allows to obtain full and quick fusion through the slots which are on it's surface. These slots doesn't effect the endurance which cage resists against the pressure caused by body weight. It is fixed to body strongly through the teeth at it's inferior and superior surface.

There are cage sizes for different anatomies. The sizes of the cages; it is between 6 mm and 16 mm.



Peek Tlif



Titanium Tlif



Tlif Cage, Expandable, Peek



Tlif Cage, Expandable, Peek(Turn)

STERILE LUMBAR TLIF CAGE, RIGID, PEEK(TURN)



Product Name	Reference Number	Product Name	Reference Number
BIOMECH LUMBAR TLIF CAGE, RIGID, PEEK(TURN) 28mm-6mm-5°	1110.0028065	BIOMECH LUMBAR TLIF CAGE, RIGID, PEEK(TURN) 33mm-6mm-5°	1110.0033065
BIOMECH LUMBAR TLIF CAGE, RIGID, PEEK(TURN) 28mm-7mm-5°	1110.0028075	BIOMECH LUMBAR TLIF CAGE, RIGID, PEEK(TURN) 33mm-7mm-5°	1110.0033075
BIOMECH LUMBAR TLIF CAGE, RIGID, PEEK(TURN) 28mm-8mm-5°	1110.0028085	BIOMECH LUMBAR TLIF CAGE, RIGID, PEEK(TURN) 33mm-8mm-5°	1110.0033085
BIOMECH LUMBAR TLIF CAGE, RIGID, PEEK(TURN) 28mm-9mm-5°	1110.0028095	BIOMECH LUMBAR TLIF CAGE, RIGID, PEEK(TURN) 33mm-9mm-5°	1110.0033095
BIOMECH LUMBAR TLIF CAGE, RIGID, PEEK(TURN) 28mm-10mm-5°	1110.0028105	BIOMECH LUMBAR TLIF CAGE, RIGID, PEEK(TURN) 33mm-10mm-5°	1110.0033105
BIOMECH LUMBAR TLIF CAGE, RIGID, PEEK(TURN) 28mm-11mm-5°	1110.0028115	BIOMECH LUMBAR TLIF CAGE, RIGID, PEEK(TURN) 33mm-11mm-5°	1110.0033115
BIOMECH LUMBAR TLIF CAGE, RIGID, PEEK(TURN) 28mm-12mm-5°	1110.0028125	BIOMECH LUMBAR TLIF CAGE, RIGID, PEEK(TURN) 33mm-12mm-5°	1110.0033125
BIOMECH LUMBAR TLIF CAGE, RIGID, PEEK(TURN) 28mm-13mm-5°	1110.0028135	BIOMECH LUMBAR TLIF CAGE, RIGID, PEEK(TURN) 33mm-13mm-5°	1110.0033135
BIOMECH LUMBAR TLIF CAGE, RIGID, PEEK(TURN) 28mm-14mm-5°	1110.0028145	BIOMECH LUMBAR TLIF CAGE, RIGID, PEEK(TURN) 33mm-14mm-5°	1110.0033145
BIOMECH LUMBAR TLIF CAGE, RIGID, PEEK(TURN) 28mm-15mm-5°	1110.0028155	BIOMECH LUMBAR TLIF CAGE, RIGID, PEEK(TURN) 33mm-15mm-5°	1110.0033155
BIOMECH LUMBAR TLIF CAGE, RIGID, PEEK(TURN) 28mm-16mm-5°	1110.0028165	BIOMECH LUMBAR TLIF CAGE, RIGID, PEEK(TURN) 33mm-16mm-5°	1110.0033165

NON-STERILE LUMBAR TLIF CAGE, RIGID, PEEK(TURN)



Product Name	Reference Number	Product Name	Reference Number
BIOMECH NON-STERILE LUMBAR TLIF CAGE, RIGID, PEEK(TURN) 28mm-6mm-5°	1110.0028065NS	BIOMECH NON-STERILE LUMBAR TLIF CAGE, RIGID, PEEK(TURN) 33mm-6mm-5°	1110.0033065NS
BIOMECH NON-STERILE LUMBAR TLIF CAGE, RIGID, PEEK(TURN) 28mm-7mm-5°	1110.0028075NS	BIOMECH NON-STERILE LUMBAR TLIF CAGE, RIGID, PEEK(TURN) 33mm-7mm-5°	1110.0033075NS
BIOMECH NON-STERILE LUMBAR TLIF CAGE, RIGID, PEEK(TURN) 28mm-8mm-5°	1110.0028085NS	BIOMECH NON-STERILE LUMBAR TLIF CAGE, RIGID, PEEK(TURN) 33mm-8mm-5°	1110.0033085NS
BIOMECH NON-STERILE LUMBAR TLIF CAGE, RIGID, PEEK(TURN) 28mm-9mm-5°	1110.0028095NS	BIOMECH NON-STERILE LUMBAR TLIF CAGE, RIGID, PEEK(TURN) 33mm-9mm-5°	1110.0033095NS
BIOMECH NON-STERILE LUMBAR TLIF CAGE, RIGID, PEEK(TURN) 28mm-10mm-5°	1110.0028105NS	BIOMECH NON-STERILE LUMBAR TLIF CAGE, RIGID, PEEK(TURN) 33mm-10mm-5°	1110.0033105NS
BIOMECH NON-STERILE LUMBAR TLIF CAGE, RIGID, PEEK(TURN) 28mm-11mm-5°	1110.0028115NS	BIOMECH NON-STERILE LUMBAR TLIF CAGE, RIGID, PEEK(TURN) 33mm-11mm-5°	1110.0033115NS
BIOMECH NON-STERILE LUMBAR TLIF CAGE, RIGID, PEEK(TURN) 28mm-12mm-5°	1110.0028125NS	BIOMECH NON-STERILE LUMBAR TLIF CAGE, RIGID, PEEK(TURN) 33mm-12mm-5°	1110.0033125NS
BIOMECH NON-STERILE LUMBAR TLIF CAGE, RIGID, PEEK(TURN) 28mm-13mm-5°	1110.0028135NS	BIOMECH NON-STERILE LUMBAR TLIF CAGE, RIGID, PEEK(TURN) 33mm-13mm-5°	1110.0033135NS
BIOMECH NON-STERILE LUMBAR TLIF CAGE, RIGID, PEEK(TURN) 28mm-14mm-5°	1110.0028145NS	BIOMECH NON-STERILE LUMBAR TLIF CAGE, RIGID, PEEK(TURN) 33mm-14mm-5°	1110.0033145NS
BIOMECH NON-STERILE LUMBAR TLIF CAGE, RIGID, PEEK(TURN) 28mm-15mm-5°	1110.0028155NS	BIOMECH NON-STERILE LUMBAR TLIF CAGE, RIGID, PEEK(TURN) 33mm-15mm-5°	1110.0033155NS
BIOMECH NON-STERILE LUMBAR TLIF CAGE, RIGID, PEEK(TURN) 28mm-16mm-5°	1110.0028165NS	BIOMECH NON-STERILE LUMBAR TLIF CAGE, RIGID, PEEK(TURN) 33mm-16mm-5°	1110.0033165NS

STERILE LUMBAR TLIF CAGE, RIGID, TITANIUM (TURN)



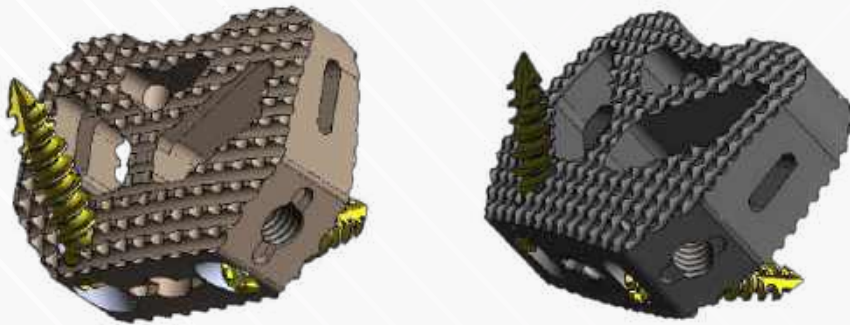
Product Name	Reference Number	Product Name	Reference Number
BIOMECH LUMBAR TLIF CAGE, RIGID, TITANIUM(TURN) 28mm-6mm-5°	1110.1028065	BIOMECH LUMBAR TLIF CAGE, RIGID, TITANIUM (TURN) 33mm-6mm-5°	1110.0033065
BIOMECH LUMBAR TLIF CAGE, RIGID, TITANIUM (TURN) 28mm-7mm-5°	1110.1028075	BIOMECH LUMBAR TLIF CAGE, RIGID, TITANIUM (TURN) 33mm-7mm-5°	1110.0033075
BIOMECH LUMBAR TLIF CAGE, RIGID, TITANIUM (TURN) 28mm-8mm-5°	1110.1028085	BIOMECH LUMBAR TLIF CAGE, RIGID, TITANIUM (TURN) 33mm-8mm-5°	1110.0033085
BIOMECH LUMBAR TLIF CAGE, RIGID, TITANIUM (TURN) 28mm-9mm-5°	1110.1028095	BIOMECH LUMBAR TLIF CAGE, RIGID, TITANIUM (TURN) 33mm-9mm-5°	1110.0033095
BIOMECH LUMBAR TLIF CAGE, RIGID,TITANIUM(TURN) 28mm-10mm-5°	1110.1028105	BIOMECH LUMBAR TLIF CAGE, RIGID, TITANIUM (TURN) 33mm-10mm-5°	1110.0033105
BIOMECH LUMBAR TLIF CAGE, RIGID, TITANIUM(TURN) 28mm-11mm-5°	1110.1028115	BIOMECH LUMBAR TLIF CAGE, RIGID, TITANIUM (TURN) 33mm-11mm-5°	1110.0033115
BIOMECH LUMBAR TLIF CAGE, RIGID, TITANIUM(TURN) 28mm-12mm-5°	1110.1028125	BIOMECH LUMBAR TLIF CAGE, RIGID, TITANIUM (TURN) 33mm-12mm-5°	1110.0033125
BIOMECH LUMBAR TLIF CAGE, RIGID, TITANIUM(TURN) 28mm-13mm-5°	1110.1028135	BIOMECH LUMBAR TLIF CAGE, RIGID, TITANIUM (TURN) 33mm-13mm-5°	1110.0033135
BIOMECH LUMBAR TLIF CAGE, RIGID, TITANIUM(TURN) 28mm-14mm-5°	1110.1028145	BIOMECH LUMBAR TLIF CAGE, RIGID, TITANIUM (TURN) 33mm-14mm-5°	1110.0033145
BIOMECH LUMBAR TLIF CAGE, RIGID, TITANIUM(TURN) 28mm-15mm-5°	1110.1028155	BIOMECH LUMBAR TLIF CAGE, RIGID, TITANIUM (TURN) 33mm-15mm-5°	1110.0033155
BIOMECH LUMBAR TLIF CAGE, RIGID, TITANIUM(TURN) 28mm-16mm-5°	1110.1028165	BIOMECH LUMBAR TLIF CAGE, RIGID, TITANIUM (TURN) 33mm-16mm-5°	1110.0033165

NON-STERILE LUMBAR TLIF CAGE, RIGID, TITANIUM (TURN)



Product Name	Reference Number	Product Name	Reference Number
BIOMECH NON-STERILE LUMBAR TLIF CAGE, RIGID, TITANIUM(TURN) 28mm-6mm-5°	1110.1028065NS	BIOMECH NON-STERILE LUMBAR TLIF CAGE, RIGID, TITANIUM (TURN) 33mm-6mm-5°	1110.1033065NS
BIOMECH NON-STERILE LUMBAR TLIF CAGE, RIGID, TITANIUM(TURN) 28mm-7mm-5°	1110.1028075NS	BIOMECH NON-STERILE LUMBAR TLIF CAGE, RIGID, TITANIUM (TURN) 33mm-7mm-5°	1110.1033075NS
BIOMECH NON-STERILE LUMBAR TLIF CAGE, RIGID, TITANIUM(TURN) 28mm-8mm-5°	1110.1028085NS	BIOMECH NON-STERILE LUMBAR TLIF CAGE, RIGID, TITANIUM (TURN) 33mm-8mm-5°	1110.1033085NS
BIOMECH NON-STERILE LUMBAR TLIF CAGE, RIGID, TITANIUM(TURN) 28mm-9mm-5°	1110.1028095NS	BIOMECH NON-STERILE LUMBAR TLIF CAGE, RIGID, TITANIUM TURN) 33mm-9mm-5°	1110.1033095NS
BIOMECH NON-STERILE LUMBAR TLIF CAGE, RIGID, TITANIUM (TURN) 28mm-10mm-5°	1110.1028105NS	BIOMECH NON-STERILE LUMBAR TLIF CAGE, RIGID, TITANIUM(TURN) 33mm-10mm-5°	1110.1033105NS
BIOMECH NON-STERILE LUMBAR TLIF CAGE, RIGID, TITANIUM(TURN) 28mm-11mm-5°	1110.1028115NS	BIOMECH NON-STERILE LUMBAR TLIF CAGE, RIGID, TITANIUM(TURN) 33mm-11mm-5°	1110.1033115NS
BIOMECH NON-STERILE LUMBAR TLIF CAGE, RIGID, TITANIUM(TURN) 28mm-12mm-5°	1110.1028125NS	BIOMECH NON-STERILE LUMBAR TLIF CAGE, RIGID, TITANIUM(TURN) 33mm-12mm-5°	1110.1033125NS
BIOMECH NON-STERILE LUMBAR TLIF CAGE, RIGID, TITANIUM(TURN) 28mm-13mm-5°	1110.1028135NS	BIOMECH NON-STERILE LUMBAR TLIF CAGE, RIGID, TITANIUM(TURN) 33mm-13mm-5°	1110.1033135NS
BIOMECH NON-STERILE LUMBAR TLIF CAGE, RIGID, TITANIUM(TURN) 28mm-14mm-5°	1110.1028145NS	BIOMECH NON-STERILE LUMBAR TLIF CAGE, RIGID, TITANIUM(TURN) 33mm-14mm-5°	1110.1033145NS
BIOMECH NON-STERILE LUMBAR TLIF CAGE, RIGID, TITANIUM(TURN) 28mm-15mm-5°	1110.1028155NS	BIOMECH NON-STERILE LUMBAR TLIF CAGE, RIGID, TITANIUM(TURN) 33mm-15mm-5°	1110.1033155NS
BIOMECH NON-STERILE LUMBAR TLIF CAGE, RIGID, TITANIUM(TURN) 28mm-16mm-5°	1110.1028165NS	BIOMECH NON-STERILE LUMBAR TLIF CAGE, RIGID, TITANIUM(TURN) 33mm-16mm-5°	1110.1033165NS

ANTERIOR LUMBAR INTERBODY FUSION (ALIF)



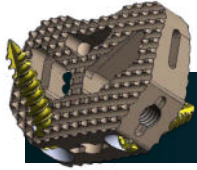
Anterior Lumbar Interbody Fusion (Alif) alleviates pain through the removal of a damaged or diseased disc through an anterior approach.

This procedure involves the complete removal of the intervertebral disc and the implantation of an interbody fusion device to restore intervertebral height and fuse the vertebral bodies of the affected segment.

Anterior Lumbar Interbody Fusion Cage is manufactured from peek and Titanium alloy material which is compatible with MRI and CT.

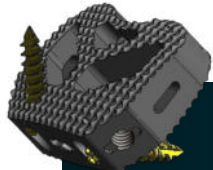
There are cage sizes for different anatomies. The sizes of the cages; it is between 9,5 mm and 15,5 mm.

STERILE LUMBAR ALIF CAGE, RIGID PEEK



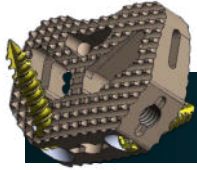
Product Name	Reference Number
BIOMECH LUMBAR ALIF CAGE, RIGID, PEEK 30mm 24mm 9,5mm (9°)	1107.3024095
BIOMECH LUMBAR ALIF CAGE, RIGID, PEEK 30mm 24mm 11,5mm (9°)	1107.3024115
BIOMECH LUMBAR ALIF CAGE, RIGID, PEEK 30mm 24mm 13,5mm (9°)	1107.3024135
BIOMECH LUMBAR ALIF CAGE, RIGID, PEEK 30mm 24mm 15,5mm (9°)	1107.3024155
BIOMECH LUMBAR ALIF CAGE, RIGID, PEEK 38mm 28mm 9,5mm (9°)	1107.3824095
BIOMECH LUMBAR ALIF CAGE, RIGID, PEEK 38mm 28mm 11,5mm (9°)	1107.3824115
BIOMECH LUMBAR ALIF CAGE, RIGID, PEEK 38mm 28mm 13,5mm (9°)	1107.3824135
BIOMECH LUMBAR ALIF CAGE, RIGID, PEEK 38mm 28mm 15,5mm (9°)	1107.3824155

STERILE LUMBAR ALIF CAGE, RIGID TITANIUM

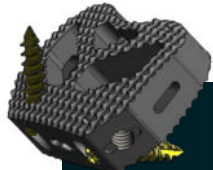


Product Name	Reference Number
BIOMECH LUMBAR ALIF CAGE, RIGID, TITANIUM 30mm-24mm-9,5mm (9°)	1108.3024095
BIOMECH LUMBAR ALIF CAGE, RIGID, TITANIUM 30mm-24mm-11,5mm (9°)	1108.3024115
BIOMECH LUMBAR ALIF CAGE, RIGID, TITANIUM 30mm-24mm-13,5mm (9°)	1108.3024135
BIOMECH LUMBAR ALIF CAGE, RIGID, TITANIUM 30mm-24mm-15,5mm (9°)	1108.3024155
BIOMECH LUMBAR ALIF CAGE, RIGID, TITANIUM 38mm-28mm-9,5mm (9°)	1108.3824095
BIOMECH LUMBAR ALIF CAGE, RIGID, TITANIUM 38mm-28mm-11,5mm (9°)	1108.3824115
BIOMECH LUMBAR ALIF CAGE, RIGID, TITANIUM 38mm-28mm-13,5mm (9°)	1108.3824135
BIOMECH LUMBAR ALIF CAGE, RIGID, TITANIUM 38mm-28mm-15,5mm (9°)	1108.3824155

NON-STERILE LUMBAR ALIF CAGE, RIGID PEEK



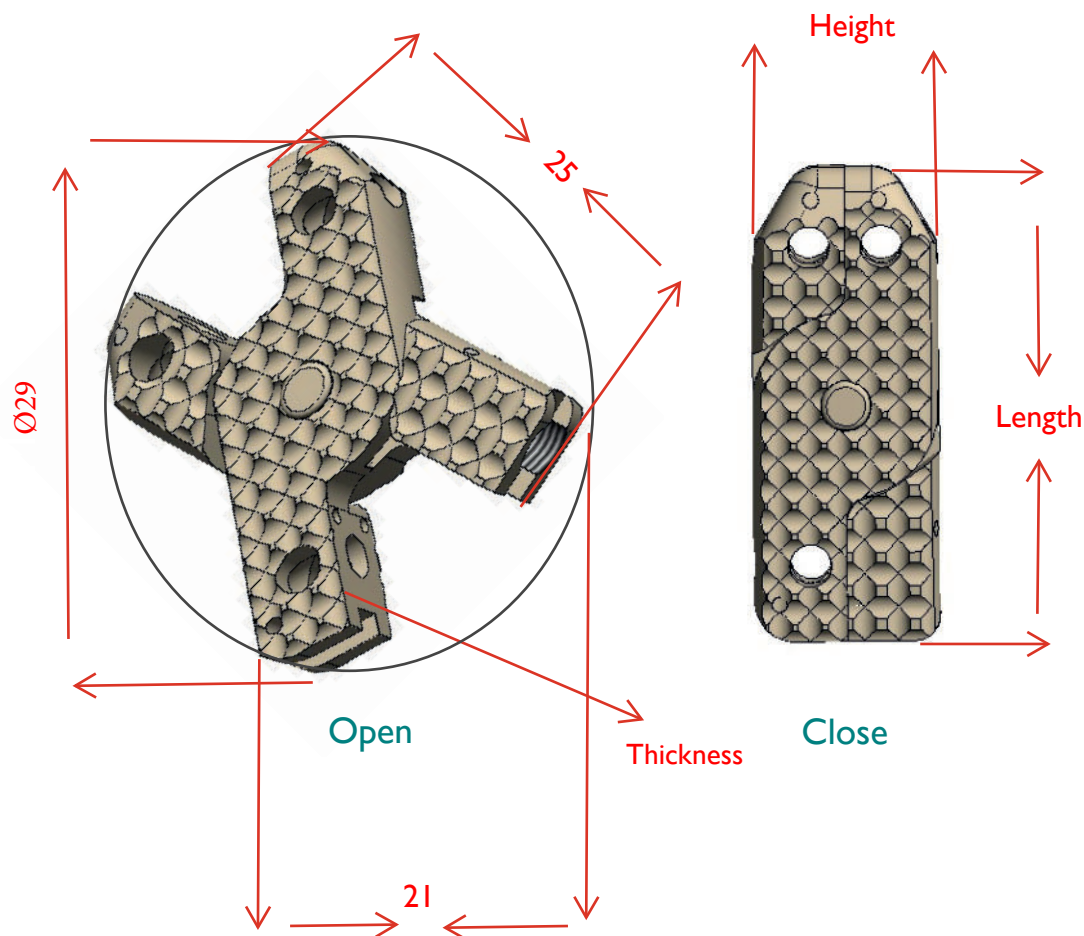
Product Name	Reference Number
BIOMECH NON-STERILE LUMBAR ALIF CAGE, RIGID, PEEK 30mm-24mm-9,5mm (9°)	I107.3024095NS
BIOMECH NON-STERILE LUMBAR ALIF CAGE, RIGID, PEEK 30mm-24mm-11,5mm (9°)	I107.3024115NS
BIOMECH NON-STERILE LUMBAR ALIF CAGE, RIGID, PEEK 30mm-24mm-13,5mm (9°)	I107.3024135NS
BIOMECH NON-STERILE LUMBAR ALIF CAGE, RIGID, PEEK 30mm-24mm-15,5mm (9°)	I107.3024155NS
BIOMECH NON-STERILE LUMBAR ALIF CAGE, RIGID, PEEK 38mm-28mm-9,5mm (9°)	I107.3824095NS
BIOMECH NON-STERILE LUMBAR ALIF CAGE, RIGID, PEEK 38mm-28mm-11,5mm (9°)	I107.3824115NS
BIOMECH NON-STERILE LUMBAR ALIF CAGE, RIGID, PEEK 38mm-28mm-13,5mm (9°)	I107.3824135NS
BIOMECH NON-STERILE LUMBAR ALIF CAGE, RIGID, PEEK 38mm-28mm-15,5mm (9°)	I107.3824155NS



NON-STERILE LUMBAR ALIF CAGE, RIGID TITANIUM

Product Name	Reference Number
BIOMECH NON-STERILE LUMBAR ALIF CAGE, RIGID, TITANIUM 30mm-24mm-9,5mm (9°)	I108.3024095NS
BIOMECH NON-STERILE LUMBAR ALIF CAGE, RIGID, TITANIUM 30mm-24mm-11,5mm (9°)	I108.3024115NS
BIOMECH NON-STERILE LUMBAR ALIF CAGE, RIGID, TITANIUM 30mm-24mm-13,5mm (9°)	I108.3024135NS
BIOMECH NON-STERILE LUMBAR ALIF CAGE, RIGID, TITANIUM 30mm-24mm-15,5mm (9°)	I108.3024155NS
BIOMECH NON-STERILE LUMBAR ALIF CAGE, RIGID, TITANIUM 38mm-28mm-9,5mm (9°)	I108.3824095NS
BIOMECH NON-STERILE LUMBAR ALIF CAGE, RIGID, TITANIUM 38mm-28mm-11,5mm (9°)	I108.3824115NS
BIOMECH NON-STERILE LUMBAR ALIF CAGE, RIGID, TITANIUM 38mm-28mm-13,5mm (9°)	I108.3824135NS
BIOMECH NON-STERILE LUMBAR ALIF CAGE, RIGID, TITANIUM 38mm-28mm-15,5mm (9°)	I108.3824155NS

XLIF LUMBAR ALIF CAGE, EXPANDABLE



The XLIF Lumbar Cage system is manufactured from Titanium or PEEK (Polyether Ether Ketone) material, both of which are compatible with the anatomy of the lumbar disc.

The XLIF consists of components connected to each other by a unidirectional bridge extending from the central section.

The upper and lower surfaces of the XLIF MULTIXLIF systems are serrated, preventing slippage from the disc space and enabling controlled load transfer with the vertebral endplates.

Furthermore, it is specially manufactured from Titanium or PEEK alloy, and its serrated surface structure allows the material to interlock with the bone tissue, effectively preventing slippage.

In Titanium products, gap control is achieved by means of Titanium or Tantalum pins placed within the system.

All these components are supplied in a container (carrying case) and boxes, together with various instruments of different shapes and sizes.

Expandable lumbar implants are produced from Titanium or PEEK due to their high biocompatibility and enhanced visibility in radiological examinations such as MRI and CT.

When the product is in the closed position:

L = 28 mm represents the length,

M = 11 mm represents the height,

T represents the thickness.

Only the thickness (T) measurement of the product varies.

STERILE LUMBAR ALIF CAGE, EXPANDABLE



Product Name	Reference Number
BIOMECH LUMBAR ALIF CAGE, EXPANDABLE 30-24-9,5 (L=28mm , M = 11 , T=6,5mm)	1109.3024095
BIOMECH LUMBAR ALIF CAGE, EXPANDABLE 30-24-11,5 (L=28mm, M = 11,T=7mm)	1109.3024115
BIOMECH LUMBAR ALIF CAGE, EXPANDABLE 30-24-13,5 (L=28mm, M = 11,T=8mm)	1109.3024135
BIOMECH LUMBAR ALIF CAGE, EXPANDABLE 30-24-15,5 (L=28mm, M = 11,T=9mm)	1109.3024155
BIOMECH LUMBAR ALIF CAGE, EXPANDABLE 38-28-9,5 (L=28mm ,M= 11 T,=10mm)	1109.3824095
BIOMECH LUMBAR ALIF CAGE, EXPANDABLE 38-28-11,5 (L=28mm, M= 11,T=11mm)	1109.3824115
BIOMECH LUMBAR ALIF CAGE, EXPANDABLE 38-28-13,5 (L=28mm, M = 11,T=12mm)	1109.3824135
BIOMECH LUMBAR ALIF CAGE, EXPANDABLE 38-28-15,5 (L=28mm, M = 11, T=13mm)	1109.3824155

NON-STERILE LUMBAR ALIF CAGE, EXPANDABLE



Product Name	Reference Number
BIOMECH NON-STERILE LUMBAR ALIF CAGE, EXPANDABLE 30-24-9,5 (L=28mm, M = 11, T=6,5mm)	1109.3024095NS
BIOMECH NON-STERILE LUMBAR ALIF CAGE, EXPANDABLE 30-24-11,5 (L=28mm, M = 11,T=7mm)	1109.3024115NS
BIOMECH NON-STERILE LUMBAR ALIF CAGE, EXPANDABLE 30-24-13,5 (L=28mm, M = 11,T=8mm)	1109.3024135NS
BIOMECH NON-STERILE LUMBAR ALIF CAGE, EXPANDABLE 30-24-15,5 mm (L=28mm, M = 11,T=9mm)	1109.3024155NS
BIOMECH NON-STERILE LUMBAR ALIF CAGE, EXPANDABLE 38-28-9,5 (L=28mm, M = 11, T=10mm)	1109.3824095NS
BIOMECH NON-STERILE LUMBAR ALIF CAGE, EXPANDABLE 38-28-11,5 (L=28mm, M = 11, T=11mm)	1109.3824115NS
BIOMECH NON-STERILE LUMBAR ALIF CAGE, EXPANDABLE 38-28-13,5 mm (L=28mm, M = 11,T=12mm)	1109.3824135NS
BIOMECH NON-STERILE LUMBAR ALIF CAGE, EXPANDABLE 38-28-15,5 (L=28mm, M = 11,T=13mm)	1109.3824155NS

LUMBAR LATERAL INTERBODY FUSION XLIF CAGE

GENERAL DESCRIPTION

LUMBAR LATERAL INTERBODY FUSION XLIF CAGE system is consisted of components made of peek (Polyether Ether Ketone) and Titanium raw materials compatible with the Lumbar disc anatomy and interconnected by a one-way bridge from the central section.

The upper surfaces of the superior (upper) and inferior (lower) parts of the system are threaded and 4 (four) pins specially made of titanium alloy are placed, thus driving the material into the bony tissue and preventing it from shifting. Also, titanium pins provide great convenience in terms of choosing the area where the material is to be placed.

Expandability of the system is also provided by a distracter (space expander). As the distracter is also a spaced and locked apparatus, it both performs the space expansion as required by the physician and provides safe use of the expander thanks to its locking mechanism while applying this method as well. All these components are supplied in a container (carrying box) and sterile boxes complete with instruments of several different shapes and dimensions.

BIOMECH Rigid Lumbar Cage implants are manufactured of PEEK material due to their high bio-compatibility and to the fact that they may be imaged better in such radiological examinations as MR, CT, etc. **FOR USE ON OR BY THE ORDER OF A PHYSICIAN, SURGEON OR SPECIALIST DOCTOR ONLY.**



STERILE LATERAL INTERBODY FUSION XLIF CAGE, PEEK



Product Name	Reference Number
BIOMECH LUMBAR LATERAL INTERBODY FUSION XLIF CAGE, PEEK 8-45 (K=16mm -L=45mm -T= 9,5mm) 6°	1112.0000845
BIOMECH LUMBAR LATERAL INTERBODY FUSION XLIF CAGE, PEEK 8-50 (K=16mm -L=50mm - T=11,5mm) 6°	1112.0000850
BIOMECH LUMBAR LATERAL INTERBODY FUSION XLIF CAGE, PEEK 10-45(K=18mm - L=45mm - T=9,5mm) 6°	1112.0001045
BIOMECH LUMBAR LATERAL INTERBODY FUSION XLIF CAGE, PEEK 10-50 (K=18 mm - L=50mm - T=11,5mm) 6°	1112.0001050
BIOMECH LUMBAR LATERAL INTERBODY FUSION XLIF CAGE, PEEK 12-45(K=20mm, - L=45mm, - T=11,5mm) 6°	1112.0001245
BIOMECH LUMBAR LATERAL INTERBODY FUSION XLIF CAGE, PEEK 12-50 (K=20mm, - L=50mm, - T=11,5mm) 6°	1112.0001250
BIOMECH LUMBAR LATERAL INTERBODY FUSION XLIF CAGE, PEEK 14-45 (K=22mm, - L=45mm, - T=9,5mm) 6°	1112.0001445
BIOMECH LUMBAR LATERAL INTERBODY FUSION XLIF CAGE, PEEK 14-50 (K=22mm ,- L=50mm,- T=11,5mm) 6°	1112.0001450

NON-STERILE LATERAL INTERBODY FUSION XLIF CAGE, PEEK



Product Name	Reference Number
BIOMECH NON-STERILE LUMBAR LATERAL INTERBODY FUSION XLIF CAGE, PEEK 8-45 (K=16mm, -L= 45mm ,- T=9,5mm) 6°	1112.0000845NS
BIOMECH NON-STERILE LUMBAR LATERAL INTERBODY FUSION XLIF CAGE, PEEK 8-50 (K=16mm, -L= 50mm, - T=11,5mm) 6°	1112.0000850NS
BIOMECH NON-STERILE LUMBAR LATERAL INTERBODY FUSION XLIF CAGE, PEEK 10-45 (K=18mm, -L= 45mm, -T= 9,5mm) 6°	1112.0001045NS
BIOMECH NON-STERILE LUMBAR LATERAL INTERBODY FUSION XLIF CAGE, PEEK 10-50 (K=18 mm, -L= 50mm, - T=11,5mm) 6°	1112.0001050NS
BIOMECH NON-STERILE LUMBAR LATERAL INTERBODY FUSION XLIF CAGE, PEEK 12-45 (K=20mm, -L= 45mm, - T=11,5mm) 6°	1112.0001245NS
BIOMECH NON-STERILE LUMBAR LATERAL INTERBODY FUSION XLIF CAGE, PEEK 12-50 (K=20mm, - L=50mm, - T=11,5mm) 6°	1112.0001250NS
BIOMECH NON-STERILE LUMBAR LATERAL INTERBODY FUSION XLIF CAGE, PEEK 14-45 (K=22mm, - L=45mm,- T=9,5mm) 6°	1112.0001445NS
BIOMECH NON-STERILE LUMBAR LATERAL INTERBODY FUSION XLIF CAGE, PEEK14-50 (K=22mm, - L=50mm, - T=11,5mm) 6°	1112.0001450NS

STERILE LATERAL INTERBODY FUSION XLIF CAGE, TITANIUM



Product Name	Reference Number
BIOMECH LUMBAR LATERAL INTERBODY FUSION XLIF CAGE, TITANIUM 8-45 (K=16mm,- L=45mm, - T=9,5mm) 6°	1113.0000845
BIOMECH LUMBAR LATERAL INTERBODY FUSION XLIF CAGE, TITANIUM 8-50 (K=16mm, - L=50mm, -T= 11,5mm) 6°	1113.0000850
BIOMECH LUMBAR LATERAL INTERBODY FUSION XLIF CAGE, TITANIUM 10-45 (K=18mm, L= 45mm, -T= 9,5mm) 6°	1113.0001045
BIOMECH LUMBAR LATERAL INTERBODY FUSION XLIF CAGE, TITANIUM 10-50 (K=18mm, - L=50mm, - T=11,5mm) 6°	1113.0001050
BIOMECH LUMBAR LATERAL INTERBODY FUSION XLIF CAGE, TITANIUM 12-45 (K=20mm,- L=45mm, - T=9,5mm) 6°	1113.0001245
BIOMECH LUMBAR LATERAL INTERBODY FUSION XLIF CAGE, TITANIUM 12-50 (K=20mm, - L=50mm, - T=11,5mm) 6°	1113.0001250
BIOMECH LUMBAR LATERAL INTERBODY FUSION XLIF CAGE, TITANIUM 14-45 (K=22mm, - L=45mm, -T= 9,5mm) 6°	1113.0001445
BIOMECH LUMBAR LATERAL INTERBODY FUSION XLIF CAGE, TITANIUM 14-50 (K=22mm, - L=50mm, - T=11,5mm) 6°	1113.0001450

NON-STERILE LATERAL INTERBODY FUSION XLIF CAGE, TITANIUM



Product Name	Reference Number
BIOMECH NON-STERILE LUMBAR LATERAL INTERBODY FUSION XLIF CAGE, TITANIUM 8-45(K=16mm, - L=45mm, T=9,5mm) 6°	1113.0000845NS
BIOMECH NON-STERILE LUMBAR LATERAL INTERBODY FUSION XLIF CAGE, TITANIUM 8-50 (K=16mm,-L= 50mm,- T=11,5mm) 6°	1113.0000850NS
BIOMECH NON-STERILE LUMBAR LATERAL INTERBODY FUSION XLIF CAGE, TITANIUM 10-45 (K=18mm - L=45mm -T= 9,5mm) 6°	1113.0001045NS
BIOMECH NON-STERILE LUMBAR LATERAL INTERBODY FUSION XLIF CAGE, TITANIUM 10-50 (K= 18mm - L=50mm -T=11,5mm) 6°	1113.0001050NS
BIOMECH NON-STERILE LUMBAR LATERAL INTERBODY FUSION XLIF CAGE, TITANIUM 12-45 (K= 20mm -L= 45mm - T=9,5mm) 6°	1113.0001245NS
BIOMECH NON-STERILE LUMBAR LATERAL INTERBODY FUSION XLIF CAGE, TITANIUM 12-50 (K= 20mm -L= 50mm - T=11,5mm) 6°	1113.0001250NS
BIOMECH NON-STERILE LUMBAR LATERAL INTERBODY FUSION XLIF CAGE, TITANIUM 14-45 (K=22mm - L=45mm -T= 9,5mm) 6°	1113.0001445NS
BIOMECH NON-STERILE LUMBAR LATERAL INTERBODY FUSION XLIF CAGE, TITANIUM 14-50 (K=22mm - L=50mm - T=11,5mm) 6°	1113.0001450NS

LUMBAR INTERSPINOUS FUSION DEVICE

GENERAL DESCRIPTION

Ligamed Interspinous Fusion Device is a implant that is designed to fit between the spinous processes of the lumbar spine. Consists of a single component with deployable superior and inferior projections that engage the spinous processes to secure it in place. Ligamed Interspinous Fusion Device is provided non-sterile in different sizes.



Interspinous Fusion Device is provided as non-sterile and sterile formo in different sizes.



8mm

10mm

12mm



14 mm

16 mm

NON-STERILE INTERSPINOUS FUSION DEVICE



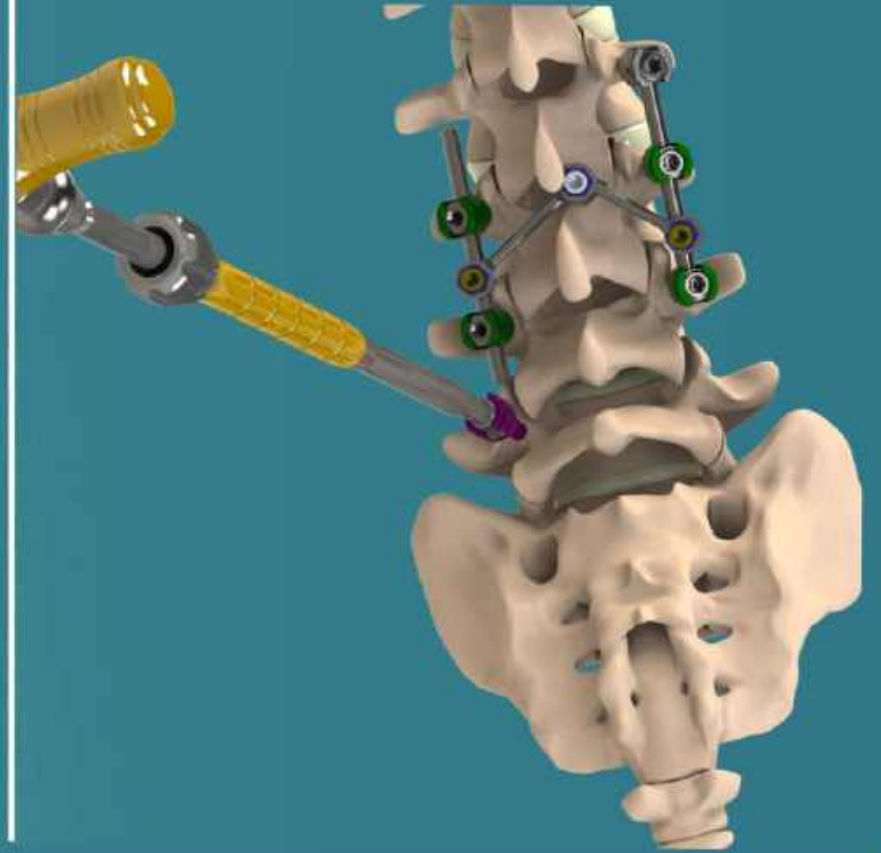
Product Name	Reference Number
LIGAMED INTERSPINOUS FUSION DEVICE 8MM	LIGAIFD 08
LIGAMED INTERSPINOUS FUSION DEVICE 10MM	LIGAIFD 10
LIGAMED INTERSPINOUS FUSION DEVICE 12MM	LIGAIFD 12
LIGAMED INTERSPINOUS FUSION DEVICE 14MM	LIGAIFD 14
LIGAMED INTERSPINOUS FUSION DEVICE 16MM	LIGAIFD 16

STERILE INTERSPINOUS FUSION DEVICE



Product Name	Reference Number
LIGAMED INTERSPINOUS FUSION DEVICE 8MM	RSLIGAIFD 08
LIGAMED INTERSPINOUS FUSION DEVICE 10MM	RSLIGAIFD 10
LIGAMED INTERSPINOUS FUSION DEVICE 12MM	RSLIGAIFD 12
LIGAMED INTERSPINOUS FUSION DEVICE 14MM	RSLIGAIFD 14
LIGAMED INTERSPINOUS FUSION DEVICE 16MM	RSLIGAIFD 16

THORACOLUMBAR STABILIZATION SYSTEM



(POLYAXIAL – MONOAXIAL – SPONDYLOLISTHESIS – CANNULATED)

- Polyaxial and Spondylolisthesis screws enable screw angulations up to $\pm 27, 22$ degrees.
- With their double grooved and double diameter features, pedicle screws are highly resistant to loosening. Besides, it helps its user for faster and more controlled implantation.
- They are flexible enough to be implanted wherever needed.
- Color coding enables to differentiate between screw sizes.
- A specific thread structure is used to increase the compatibility of screw body and the locking screw (nut). Thus, pedicle screw, rod and locking screw can grip more safely.
- There are many screw sizes for different anatomies. The diameters of the screws; these are 4.5 - 5.5 - 6.0 - 6.2 - 6.5 - 7.0 - 7.5 - 8.5 mm.



MONOAXIAL STABILIZATION SCREW



Product Name	Reference Number	Product Name	Reference Number
BIOMECH MONOAXIAL STABILIZATION SCREW 4,0X20	1201.0004020	BIOMECH MONOAXIAL STABILIZATION SCREW 5,5X20	1201.0005520
BIOMECH MONOAXIAL STABILIZATION SCREW 4,0X25	1201.0004025	BIOMECH MONOAXIAL STABILIZATION SCREW 5,5X25	1201.0005525
BIOMECH MONOAXIAL STABILIZATION SCREW 4,0X30	1201.0004030	BIOMECH MONOAXIAL STABILIZATION SCREW 5,5X30	1201.0005530
BIOMECH MONOAXIAL STABILIZATION SCREW 4,0X35	1201.0004035	BIOMECH MONOAXIAL STABILIZATION SCREW 5,5X35	1201.0005535
BIOMECH MONOAXIAL STABILIZATION SCREW 4,0X40	1201.0004040	BIOMECH MONOAXIAL STABILIZATION SCREW 5,5X40	1201.0005540
BIOMECH MONOAXIAL STABILIZATION SCREW 4,0X45	1201.0004045	BIOMECH MONOAXIAL STABILIZATION SCREW 5,5X45	1201.0005545
BIOMECH MONOAXIAL STABILIZATION SCREW 4,0X50	1201.0004050	BIOMECH MONOAXIAL STABILIZATION SCREW 5,5X50	1201.0005550
BIOMECH MONOAXIAL STABILIZATION SCREW 4,0X55	1201.0004055	BIOMECH MONOAXIAL STABILIZATION SCREW 5,5X55	1201.0005555
BIOMECH MONOAXIAL STABILIZATION SCREW 4,0X60	1201.0004060	BIOMECH MONOAXIAL STABILIZATION SCREW 5,5X60	1201.0005560
BIOMECH MONOAXIAL STABILIZATION SCREW 4,5X20	1201.0004520	BIOMECH MONOAXIAL STABILIZATION SCREW 6,0X20	1201.0006020
BIOMECH MONOAXIAL STABILIZATION SCREW 4,5X25	1201.0004525	BIOMECH MONOAXIAL STABILIZATION SCREW 6,0X25	1201.0006025
BIOMECH MONOAXIAL STABILIZATION SCREW 4,5X30	1201.0004530	BIOMECH MONOAXIAL STABILIZATION SCREW 6,0X30	1201.0006030
BIOMECH MONOAXIAL STABILIZATION SCREW 4,5X35	1201.0004535	BIOMECH MONOAXIAL STABILIZATION SCREW 6,0X35	1201.0006035
BIOMECH MONOAXIAL STABILIZATION SCREW 4,5X40	1201.0004540	BIOMECH MONOAXIAL STABILIZATION SCREW 6,0X40	1201.0006040
BIOMECH MONOAXIAL STABILIZATION SCREW 4,5X45	1201.0004545	BIOMECH MONOAXIAL STABILIZATION SCREW 6,0X45	1201.0006045
BIOMECH MONOAXIAL STABILIZATION SCREW 4,5X50	1201.0004550	BIOMECH MONOAXIAL STABILIZATION SCREW 6,0X50	1201.0006050
BIOMECH MONOAXIAL STABILIZATION SCREW 4,5X55	1201.0004555	BIOMECH MONOAXIAL STABILIZATION SCREW 6,0X55	1201.0006055
BIOMECH MONOAXIAL STABILIZATION SCREW 4,5X60	1201.0004560	BIOMECH MONOAXIAL STABILIZATION SCREW 6,0X60	1201.0006060
BIOMECH MONOAXIAL STABILIZATION SCREW 5,0X20	1201.0005020	BIOMECH MONOAXIAL STABILIZATION SCREW 6,2X20	1201.0006220
BIOMECH MONOAXIAL STABILIZATION SCREW 5,0X25	1201.0005025	BIOMECH MONOAXIAL STABILIZATION SCREW 6,2X25	1201.0006225
BIOMECH MONOAXIAL STABILIZATION SCREW 5,0X30	1201.0005030	BIOMECH MONOAXIAL STABILIZATION SCREW 6,2X30	1201.0006230
BIOMECH MONOAXIAL STABILIZATION SCREW 5,0X35	1201.0005035	BIOMECH MONOAXIAL STABILIZATION SCREW 6,2X35	1201.0006235
BIOMECH MONOAXIAL STABILIZATION SCREW 5,0X40	1201.0005040	BIOMECH MONOAXIAL STABILIZATION SCREW 6,2X40	1201.0006240
BIOMECH MONOAXIAL STABILIZATION SCREW 5,0X45	1201.0005045	BIOMECH MONOAXIAL STABILIZATION SCREW 6,2X45	1201.0006245
BIOMECH MONOAXIAL STABILIZATION SCREW 5,0X50	1201.0005050	BIOMECH MONOAXIAL STABILIZATION SCREW 6,2X50	1201.0006250
BIOMECH MONOAXIAL STABILIZATION SCREW 5,0X55	1201.0005055		
BIOMECH MONOAXIAL STABILIZATION SCREW 5,0X60	1201.0005060		

MONOAXIAL STABILIZATION SCREW



Product Name	Reference Number	Product Name	Reference Number
BIOMECH MONOAXIAL STABILIZATION SCREW 6,2X55	I201.0006255	BIOMECH MONOAXIAL STABILIZATION SCREW 8,0X20	I201.0008020
BIOMECH MONOAXIAL STABILIZATION SCREW 6,2X60	I201.0006260	BIOMECH MONOAXIAL STABILIZATION SCREW 8,0X25	I201.0008025
BIOMECH MONOAXIAL STABILIZATION SCREW 6,5X20	I201.0006520	BIOMECH MONOAXIAL STABILIZATION SCREW 8,0X30	I201.0008030
BIOMECH MONOAXIAL STABILIZATION SCREW 6,5X25	I201.0006525	BIOMECH MONOAXIAL STABILIZATION SCREW 8,0X35	I201.0008035
BIOMECH MONOAXIAL STABILIZATION SCREW 6,5X30	I201.0006530	BIOMECH MONOAXIAL STABILIZATION SCREW 8,0X40	I201.0008040
BIOMECH MONOAXIAL STABILIZATION SCREW 6,5X35	I201.0006535	BIOMECH MONOAXIAL STABILIZATION SCREW 8,0X45	I201.0008045
BIOMECH MONOAXIAL STABILIZATION SCREW 6,5X40	I201.0006540	BIOMECH MONOAXIAL STABILIZATION SCREW 8,0X50	I201.0008050
BIOMECH MONOAXIAL STABILIZATION SCREW 6,5X45	I201.0006545	BIOMECH MONOAXIAL STABILIZATION SCREW 8,0X55	I201.0008055
BIOMECH MONOAXIAL STABILIZATION SCREW 6,5X50	I201.0006550	BIOMECH MONOAXIAL STABILIZATION SCREW 8,0X60	I201.0008060
BIOMECH MONOAXIAL STABILIZATION SCREW 6,5X55	I201.0006555	BIOMECH MONOAXIAL STABILIZATION SCREW 8,5X20	I201.0008520
BIOMECH MONOAXIAL STABILIZATION SCREW 6,5X60	I201.0006560	BIOMECH MONOAXIAL STABILIZATION SCREW 8,5X25	I201.0008525
BIOMECH MONOAXIAL STABILIZATION SCREW 7,0X20	I201.0007020	BIOMECH MONOAXIAL STABILIZATION SCREW 8,5X30	I201.0008530
BIOMECH MONOAXIAL STABILIZATION SCREW 7,0X25	I201.0007025	BIOMECH MONOAXIAL STABILIZATION SCREW 8,5X35	I201.0008535
BIOMECH MONOAXIAL STABILIZATION SCREW 7,0X30	I201.0007030	BIOMECH MONOAXIAL STABILIZATION SCREW 8,5X40	I201.0008540
BIOMECH MONOAXIAL STABILIZATION SCREW 7,0X35	I201.0007035	BIOMECH MONOAXIAL STABILIZATION SCREW 8,5X45	I201.0008545
BIOMECH MONOAXIAL STABILIZATION SCREW 7,0X40	I201.0007040	BIOMECH MONOAXIAL STABILIZATION SCREW 8,5X50	I201.0008550
BIOMECH MONOAXIAL STABILIZATION SCREW 7,0X45	I201.0007045	BIOMECH MONOAXIAL STABILIZATION SCREW 8,5X55	I201.0008555
BIOMECH MONOAXIAL STABILIZATION SCREW 7,0X50	I201.0007050	BIOMECH MONOAXIAL STABILIZATION SCREW 8,5X60	I201.0008560
BIOMECH MONOAXIAL STABILIZATION SCREW 7,0X55	I201.0007055	BIOMECH MONOAXIAL STABILIZATION SCREW 8,5X65	I201.0008565
BIOMECH MONOAXIAL STABILIZATION SCREW 7,0X60	I201.0007060	BIOMECH MONOAXIAL STABILIZATION SCREW 8,5X70	I201.0008570
BIOMECH MONOAXIAL STABILIZATION SCREW 7,5X20	I201.0007520	BIOMECH MONOAXIAL STABILIZATION SCREW 8,5X75	I201.0008575
BIOMECH MONOAXIAL STABILIZATION SCREW 7,5X25	I201.0007525	BIOMECH MONOAXIAL STABILIZATION SCREW 8,5X80	I201.0008580
BIOMECH MONOAXIAL STABILIZATION SCREW 7,5X30	I201.0007530		
BIOMECH MONOAXIAL STABILIZATION SCREW 7,5X35	I201.0007535		
BIOMECH MONOAXIAL STABILIZATION SCREW 7,5X40	I201.0007540		
BIOMECH MONOAXIAL STABILIZATION SCREW 7,5X45	I201.0007545		
BIOMECH MONOAXIAL STABILIZATION SCREW 7,5X50	I201.0007550		
BIOMECH MONOAXIAL STABILIZATION SCREW 7,5X55	I201.0007555		
BIOMECH MONOAXIAL STABILIZATION SCREW 7,5X60	I201.0007560		

POLYAXIAL SPONDYLOLISTHESIS SCREW



Product Name	Reference Number
BIOMECH POLYAXIAL SPONDYLOLISTHESIS SCREW 6,5X35	1202.0006535
BIOMECH POLYAXIAL SPONDYLOLISTHESIS SCREW 6,5X40	1202.0006540
BIOMECH POLYAXIAL SPONDYLOLISTHESIS SCREW 6,5X45	1202.0006545
BIOMECH POLYAXIAL SPONDYLOLISTHESIS SCREW 6,5X50	1202.0006550
BIOMECH POLYAXIAL SPONDYLOLISTHESIS SCREW 6,5X55	1202.0006555
BIOMECH POLYAXIAL SPONDYLOLISTHESIS SCREW 6,5X60	1202.0006560
BIOMECH POLYAXIAL SPONDYLOLISTHESIS SCREW 7,0X20	1202.0007020
BIOMECH POLYAXIAL SPONDYLOLISTHESIS SCREW 7,0X25	1202.0007025
BIOMECH POLYAXIAL SPONDYLOLISTHESIS SCREW 7,0X30	1202.0007030
BIOMECH POLYAXIAL SPONDYLOLISTHESIS SCREW 7,0X35	1202.0007035
BIOMECH POLYAXIAL SPONDYLOLISTHESIS SCREW 7,0X40	1202.0007040
BIOMECH POLYAXIAL SPONDYLOLISTHESIS SCREW 7,0X45	1202.0007045
BIOMECH POLYAXIAL SPONDYLOLISTHESIS SCREW 7,0X50	1202.0007050
BIOMECH POLYAXIAL SPONDYLOLISTHESIS SCREW 7,0X55	1202.0007055
BIOMECH POLYAXIAL SPONDYLOLISTHESIS SCREW 7,0X60	1202.0007060
BIOMECH POLYAXIAL SPONDYLOLISTHESIS SCREW 7,5X20	1202.0007520
BIOMECH POLYAXIAL SPONDYLOLISTHESIS SCREW 7,5X25	1202.0007525
BIOMECH POLYAXIAL SPONDYLOLISTHESIS SCREW 7,5X30	1202.0007530
BIOMECH POLYAXIAL SPONDYLOLISTHESIS SCREW 7,5X35	1202.0007535
BIOMECH POLYAXIAL SPONDYLOLISTHESIS SCREW 7,5X40	1202.0007540
BIOMECH POLYAXIAL SPONDYLOLISTHESIS SCREW 7,5X45	1202.0007545
BIOMECH POLYAXIAL SPONDYLOLISTHESIS SCREW 7,5X50	1202.0007550
BIOMECH POLYAXIAL SPONDYLOLISTHESIS SCREW 7,5X55	1202.0007555
BIOMECH POLYAXIAL SPONDYLOLISTHESIS SCREW 7,5X60	1202.0007560
BIOMECH POLYAXIAL SPONDYLOLISTHESIS SCREW 7,5X70	1202.0007570
BIOMECH POLYAXIAL SPONDYLOLISTHESIS SCREW 7,5X90	1202.0007590



Product Name	Reference Number
BIOMECH POLYAXIAL SPONDYLOLISTHESIS SCREW 8,0X20	1202.0008020
BIOMECH POLYAXIAL SPONDYLOLISTHESIS SCREW 8,0X25	1202.0008025
BIOMECH POLYAXIAL SPONDYLOLISTHESIS SCREW 8,0X30	1202.0008030
BIOMECH POLYAXIAL SPONDYLOLISTHESIS SCREW 8,0X35	1202.0008035
BIOMECH POLYAXIAL SPONDYLOLISTHESIS SCREW 8,0X40	1202.0008040
BIOMECH POLYAXIAL SPONDYLOLISTHESIS SCREW 8,0X45	1202.0008045
BIOMECH POLYAXIAL SPONDYLOLISTHESIS SCREW 8,0X50	1202.0008050
BIOMECH POLYAXIAL SPONDYLOLISTHESIS SCREW 8,0X55	1202.0008055
BIOMECH POLYAXIAL SPONDYLOLISTHESIS SCREW 8,0X60	1202.0008060
BIOMECH POLYAXIAL SPONDYLOLISTHESIS SCREW 8,5X20	1202.0008520
BIOMECH POLYAXIAL SPONDYLOLISTHESIS SCREW 8,5X25	1202.0008525
BIOMECH POLYAXIAL SPONDYLOLISTHESIS SCREW 8,5X30	1202.0008530
BIOMECH POLYAXIAL SPONDYLOLISTHESIS SCREW 8,5X35	1202.0008535
BIOMECH POLYAXIAL SPONDYLOLISTHESIS SCREW 8,5X40	1202.0008540
BIOMECH POLYAXIAL SPONDYLOLISTHESIS SCREW 8,5X45	1202.0008545
BIOMECH POLYAXIAL SPONDYLOLISTHESIS SCREW 8,5X50	1202.0008550
BIOMECH POLYAXIAL SPONDYLOLISTHESIS SCREW 8,5X55	1202.0008555
BIOMECH POLYAXIAL SPONDYLOLISTHESIS SCREW 8,5X60	1202.0008560
BIOMECH POLYAXIAL SPONDYLOLISTHESIS SCREW 8,5X65	1202.0008565
BIOMECH POLYAXIAL SPONDYLOLISTHESIS SCREW 8,5X70	1202.0008570
BIOMECH POLYAXIAL SPONDYLOLISTHESIS SCREW 8,5X75	1202.0008575
BIOMECH POLYAXIAL SPONDYLOLISTHESIS SCREW 8,5X80	1202.0008580

MONOAXIAL SPONDYLOLISTHESIS SCREW



Product Name	Reference Number
BIOMECH POSTERIOR MONOAXIAL SPONDYLOLISTHESIS STABILIZATION SCREW 7,5X30	I203.0007530
BIOMECH POSTERIOR MONOAXIAL SPONDYLOLISTHESIS STABILIZATION SCREW 7,5X35	I203.0007535
BIOMECH POSTERIOR MONOAXIAL SPONDYLOLISTHESIS STABILIZATION SCREW 7,5X40	I203.0007540
BIOMECH POSTERIOR MONOAXIAL SPONDYLOLISTHESIS STABILIZATION SCREW 7,5X45	I203.0007545
BIOMECH POSTERIOR MONOAXIAL SPONDYLOLISTHESIS STABILIZATION SCREW 7,5X50	I203.0007550
BIOMECH POSTERIOR MONOAXIAL SPONDYLOLISTHESIS STABILIZATION SCREW 7,5X55	I203.0007555
BIOMECH POSTERIOR MONOAXIAL SPONDYLOLISTHESIS STABILIZATION SCREW 7,5X60	I203.0007560
BIOMECH POSTERIOR MONOAXIAL SPONDYLOLISTHESIS STABILIZATION SCREW 8,0X20	I203.0008020
BIOMECH POSTERIOR MONOAXIAL SPONDYLOLISTHESIS STABILIZATION SCREW 8,0X25	I203.0008025
BIOMECH POSTERIOR MONOAXIAL SPONDYLOLISTHESIS STABILIZATION SCREW 8,0X30	I203.0008030
BIOMECH POSTERIOR MONOAXIAL SPONDYLOLISTHESIS STABILIZATION SCREW 8,0X35	I203.0008035
BIOMECH POSTERIOR MONOAXIAL SPONDYLOLISTHESIS STABILIZATION SCREW 8,0X40	I203.0008040
BIOMECH POSTERIOR MONOAXIAL SPONDYLOLISTHESIS STABILIZATION SCREW 8,0X45	I203.0008045
BIOMECH POSTERIOR MONOAXIAL SPONDYLOLISTHESIS STABILIZATION SCREW 8,0X50	I203.0008050
BIOMECH POSTERIOR MONOAXIAL SPONDYLOLISTHESIS STABILIZATION SCREW 8,0X55	I203.0008055
BIOMECH POSTERIOR MONOAXIAL SPONDYLOLISTHESIS STABILIZATION SCREW 8,0X60	I203.0008060
BIOMECH POSTERIOR MONOAXIAL SPONDYLOLISTHESIS STABILIZATION SCREW 8,5X20	I203.0008520
BIOMECH POSTERIOR MONOAXIAL SPONDYLOLISTHESIS STABILIZATION SCREW 8,5X25	I203.0008525
BIOMECH POSTERIOR MONOAXIAL SPONDYLOLISTHESIS STABILIZATION SCREW 8,5X30	I203.0008530
BIOMECH POSTERIOR MONOAXIAL SPONDYLOLISTHESIS STABILIZATION SCREW 8,5X35	I203.0008535
BIOMECH POSTERIOR MONOAXIAL SPONDYLOLISTHESIS STABILIZATION SCREW 8,5X40	I203.0008540
BIOMECH POSTERIOR MONOAXIAL SPONDYLOLISTHESIS STABILIZATION SCREW 8,5X45	I203.0008545
BIOMECH POSTERIOR MONOAXIAL SPONDYLOLISTHESIS STABILIZATION SCREW 8,5X50	I203.0008550
BIOMECH POSTERIOR MONOAXIAL SPONDYLOLISTHESIS STABILIZATION SCREW 8,5X55	I203.0008555
BIOMECH POSTERIOR MONOAXIAL SPONDYLOLISTHESIS STABILIZATION SCREW 8,5X60	I203.0008560
BIOMECH POSTERIOR MONOAXIAL SPONDYLOLISTHESIS STABILIZATION SCREW 8,5X65	I203.0008565
BIOMECH POSTERIOR MONOAXIAL SPONDYLOLISTHESIS STABILIZATION SCREW 8,5X70	I203.0008570
BIOMECH POSTERIOR MONOAXIAL SPONDYLOLISTHESIS STABILIZATION SCREW 8,5X75	I203.0008575
BIOMECH POSTERIOR MONOAXIAL SPONDYLOLISTHESIS STABILIZATION SCREW 8,5X80	I203.0008580

POLYAXIAL CANNULATED STABILIZATION SCREW



Product Name	Reference Number
BIOMECH POSTERIOR POLYAXIAL CANNULATED STABILIZATION SCREW 4,0X20	I204.0004020
BIOMECH POSTERIOR POLYAXIAL CANNULATED STABILIZATION SCREW 4,0X25	I204.0004025
BIOMECH POSTERIOR POLYAXIAL CANNULATED STABILIZATION SCREW 4,0X30	I204.0004030
BIOMECH POSTERIOR POLYAXIAL CANNULATED STABILIZATION SCREW 4,0X35	I204.0004035
BIOMECH POSTERIOR POLYAXIAL CANNULATED STABILIZATION SCREW 4,0X40	I204.0004040
BIOMECH POSTERIOR POLYAXIAL CANNULATED STABILIZATION SCREW 4,0X45	I204.0004045
BIOMECH POSTERIOR POLYAXIAL CANNULATED STABILIZATION SCREW 4,0X50	I204.0004050
BIOMECH POSTERIOR POLYAXIAL CANNULATED STABILIZATION SCREW 4,0X55	I204.0004055
BIOMECH POSTERIOR POLYAXIAL CANNULATED STABILIZATION SCREW 4,0X60	I204.0004060
BIOMECH POSTERIOR POLYAXIAL CANNULATED STABILIZATION SCREW 4,5X20	I204.0004520
BIOMECH POSTERIOR POLYAXIAL CANNULATED STABILIZATION SCREW 4,5X25	I204.0004525
BIOMECH POSTERIOR POLYAXIAL CANNULATED STABILIZATION SCREW 4,5X30	I204.0004530
BIOMECH POSTERIOR POLYAXIAL CANNULATED STABILIZATION SCREW 4,5X35	I204.0004535
BIOMECH POSTERIOR POLYAXIAL CANNULATED STABILIZATION SCREW 4,5X40	I204.0004540
BIOMECH POSTERIOR POLYAXIAL CANNULATED STABILIZATION SCREW 4,5X45	I204.0004545
BIOMECH POSTERIOR POLYAXIAL CANNULATED STABILIZATION SCREW 4,5X50	I204.0004550
BIOMECH POSTERIOR POLYAXIAL CANNULATED STABILIZATION SCREW 4,5X55	I204.0004555
BIOMECH POSTERIOR POLYAXIAL CANNULATED STABILIZATION SCREW 4,5X60	I204.0004560
BIOMECH POSTERIOR POLYAXIAL CANNULATED STABILIZATION SCREW 5,0X20	I204.0005020
BIOMECH POSTERIOR POLYAXIAL CANNULATED STABILIZATION SCREW 5,0X25	I204.0005025
BIOMECH POSTERIOR POLYAXIAL CANNULATED STABILIZATION SCREW 5,0X30	I204.0005030
BIOMECH POSTERIOR POLYAXIAL CANNULATED STABILIZATION SCREW 5,0X35	I204.0005035
BIOMECH POSTERIOR POLYAXIAL CANNULATED STABILIZATION SCREW 5,0X40	I204.0005040
BIOMECH POSTERIOR POLYAXIAL CANNULATED STABILIZATION SCREW 5,0X45	I204.0005045
BIOMECH POSTERIOR POLYAXIAL CANNULATED STABILIZATION SCREW 5,0X50	I204.0005050
BIOMECH POSTERIOR POLYAXIAL CANNULATED STABILIZATION SCREW 5,0X55	I204.0005055
BIOMECH POSTERIOR POLYAXIAL CANNULATED STABILIZATION SCREW 5,0X60	I204.0005060
BIOMECH POSTERIOR POLYAXIAL CANNULATED STABILIZATION SCREW 5,5X20	I204.0005520
BIOMECH POSTERIOR POLYAXIAL CANNULATED STABILIZATION SCREW 5,5X25	I204.0005525
BIOMECH POSTERIOR POLYAXIAL CANNULATED STABILIZATION SCREW 5,5X30	I204.0005530
BIOMECH POSTERIOR POLYAXIAL CANNULATED STABILIZATION SCREW 5,5X35	I204.0005535
BIOMECH POSTERIOR POLYAXIAL CANNULATED STABILIZATION SCREW 5,5X40	I204.0005540
BIOMECH POSTERIOR POLYAXIAL CANNULATED STABILIZATION SCREW 5,5X45	I204.0005545
BIOMECH POSTERIOR POLYAXIAL CANNULATED STABILIZATION SCREW 5,5X50	I204.0005550
BIOMECH POSTERIOR POLYAXIAL CANNULATED STABILIZATION SCREW 5,5X55	I204.0005555
BIOMECH POSTERIOR POLYAXIAL CANNULATED STABILIZATION SCREW 5,5X60	I204.0005560
BIOMECH POSTERIOR POLYAXIAL CANNULATED STABILIZATION SCREW 6,0X20	I204.0006020

MONOAXIAL CANNULATED STABILIZATION SCREW

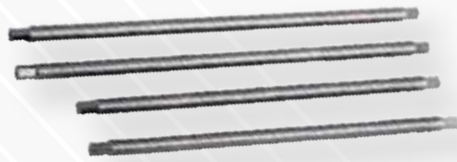


Product Name

Reference Number

BIOMECH POSTERIOR MONOAXIAL CANNULATED STABILIZATION SCREW 7,0X45	I205.0007045
BIOMECH POSTERIOR MONOAXIAL CANNULATED STABILIZATION SCREW 7,0X50	I205.0007050
BIOMECH POSTERIOR MONOAXIAL CANNULATED STABILIZATION SCREW 7,0X55	I205.0007055
BIOMECH POSTERIOR MONOAXIAL CANNULATED STABILIZATION SCREW 7,0X60	I205.0007060
BIOMECH POSTERIOR MONOAXIAL CANNULATED STABILIZATION SCREW 7,5X20	I205.0007520
BIOMECH POSTERIOR MONOAXIAL CANNULATED STABILIZATION SCREW 7,5X25	I205.0007525
BIOMECH POSTERIOR MONOAXIAL CANNULATED STABILIZATION SCREW 7,5X30	I205.0007530
BIOMECH POSTERIOR MONOAXIAL CANNULATED STABILIZATION SCREW 7,5X35	I205.0007535
BIOMECH POSTERIOR MONOAXIAL CANNULATED STABILIZATION SCREW 7,5X40	I205.0007540
BIOMECH POSTERIOR MONOAXIAL CANNULATED STABILIZATION SCREW 7,5X45	I205.0007545
BIOMECH POSTERIOR MONOAXIAL CANNULATED STABILIZATION SCREW 7,5X50	I205.0007550
BIOMECH POSTERIOR MONOAXIAL CANNULATED STABILIZATION SCREW 7,5X55	I205.0007555
BIOMECH POSTERIOR MONOAXIAL CANNULATED STABILIZATION SCREW 7,5X60	I205.0007560
BIOMECH POSTERIOR MONOAXIAL CANNULATED STABILIZATION SCREW 8,0X20	I205.0008020
BIOMECH POSTERIOR MONOAXIAL CANNULATED STABILIZATION SCREW 8,0X25	I205.0008025
BIOMECH POSTERIOR MONOAXIAL CANNULATED STABILIZATION SCREW 8,0X30	I205.0008030
BIOMECH POSTERIOR MONOAXIAL CANNULATED STABILIZATION SCREW 8,0X35	I205.0008035
BIOMECH POSTERIOR MONOAXIAL CANNULATED STABILIZATION SCREW 8,0X40	I205.0008040
BIOMECH POSTERIOR MONOAXIAL CANNULATED STABILIZATION SCREW 8,0X45	I205.0008045
BIOMECH POSTERIOR MONOAXIAL CANNULATED STABILIZATION SCREW 8,0X50	I205.0008050
BIOMECH POSTERIOR MONOAXIAL CANNULATED STABILIZATION SCREW 8,0X55	I205.0008055
BIOMECH POSTERIOR MONOAXIAL CANNULATED STABILIZATION SCREW 8,0X60	I205.0008060
BIOMECH POSTERIOR MONOAXIAL CANNULATED STABILIZATION SCREW 8,5X20	I205.0008520
BIOMECH POSTERIOR MONOAXIAL CANNULATED STABILIZATION SCREW 8,5X25	I205.0008525
BIOMECH POSTERIOR MONOAXIAL CANNULATED STABILIZATION SCREW 8,5X30	I205.0008530
BIOMECH POSTERIOR MONOAXIAL CANNULATED STABILIZATION SCREW 8,5X35	I205.0008535
BIOMECH POSTERIOR MONOAXIAL CANNULATED STABILIZATION SCREW 8,5X40	I205.0008540
BIOMECH POSTERIOR MONOAXIAL CANNULATED STABILIZATION SCREW 8,5X45	I205.0008545
BIOMECH POSTERIOR MONOAXIAL CANNULATED STABILIZATION SCREW 8,5X50	I205.0008550
BIOMECH POSTERIOR MONOAXIAL CANNULATED STABILIZATION SCREW 8,5X55	I205.0008555
BIOMECH POSTERIOR MONOAXIAL CANNULATED STABILIZATION SCREW 8,5X60	I205.0008560
BIOMECH POSTERIOR MONOAXIAL CANNULATED STABILIZATION SCREW 8,5X65	I205.0008565
BIOMECH POSTERIOR MONOAXIAL CANNULATED STABILIZATION SCREW 8,5X70	I205.0008570
BIOMECH POSTERIOR MONOAXIAL CANNULATED STABILIZATION SCREW 8,5X75	I205.0008575
BIOMECH POSTERIOR MONOAXIAL CANNULATED STABILIZATION SCREW 8,5X80	I205.0008580

RODS & LOCKING SCREW



Titanium Rods



Chromium-Cobalt Rods



Dynamic Rods



Peek Rods



Pre - Bend Peek Rods



Elastic Rods



Long Locking Screw



Locking Screw



Grooved Locking Screw

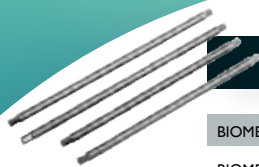
Rods

- Titanium alloy rods “Ti6Al4V-ELI, grade 5”, Chromium-Cobalt alloy rods “Cr-Co-Mo”, Peek and Dynamic Rods that are used for dynamic stabilization
- They provide optimum load distribution
- Rod diameters are 5.5 mm
- Rod lengths vary between 45 mm and 600 mm

Locking Screws

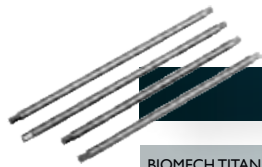
- Three different types
- It locks the movement mechanism
- A special thread profile (reverse angle) is applied to the locking screw, for a tighter hold and stabilization.

TITANIUM ROD



Product Name	Reference Number	Product Name	Reference Number
BIOMECH TITANIUM ROD 55-40 MM	1210.0055040	BIOMECH TITANIUM ROD 55-230 MM	1210.0055230
BIOMECH TITANIUM ROD 55-45 MM	1210.0055045	BIOMECH TITANIUM ROD 55-235 MM	1210.0055235
BIOMECH TITANIUM ROD 55-50 MM	1210.0055050	BIOMECH TITANIUM ROD 55-240 MM	1210.0055240
BIOMECH TITANIUM ROD 55-55 MM	1210.0055055	BIOMECH TITANIUM ROD 55-245 MM	1210.0055245
BIOMECH TITANIUM ROD 55-60 MM	1210.0055060	BIOMECH TITANIUM ROD 55-250 MM	1210.0055250
BIOMECH TITANIUM ROD 55-65 MM	1210.0055065	BIOMECH TITANIUM ROD 55-255 MM	1210.0055255
BIOMECH TITANIUM ROD 55-70 MM	1210.0055070	BIOMECH TITANIUM ROD 55-260 MM	1210.0055260
BIOMECH TITANIUM ROD 55-75 MM	1210.0055075	BIOMECH TITANIUM ROD 55-265 MM	1210.0055265
BIOMECH TITANIUM ROD 55-80 MM	1210.0055080	BIOMECH TITANIUM ROD 55-270 MM	1210.0055270
BIOMECH TITANIUM ROD 55-85 MM	1210.0055085	BIOMECH TITANIUM ROD 55-275 MM	1210.0055275
BIOMECH TITANIUM ROD 55-90 MM	1210.0055090	BIOMECH TITANIUM ROD 55-280 MM	1210.0055280
BIOMECH TITANIUM ROD 55-95 MM	1210.0055095	BIOMECH TITANIUM ROD 55-285 MM	1210.0055285
BIOMECH TITANIUM ROD 55-100 MM	1210.0055100	BIOMECH TITANIUM ROD 55-290 MM	1210.0055290
BIOMECH TITANIUM ROD 55-105 MM	1210.0055105	BIOMECH TITANIUM ROD 55-295 MM	1210.0055295
BIOMECH TITANIUM ROD 55-110 MM	1210.0055110	BIOMECH TITANIUM ROD 55-300 MM	1210.0055300
BIOMECH TITANIUM ROD 55-115 MM	1210.0055115	BIOMECH TITANIUM ROD 55-305 MM	1210.0055305
BIOMECH TITANIUM ROD 55-120 MM	1210.0055120	BIOMECH TITANIUM ROD 55-310 MM	1210.0055310
BIOMECH TITANIUM ROD 55-125 MM	1210.0055125	BIOMECH TITANIUM ROD 55-315 MM	1210.0055315
BIOMECH TITANIUM ROD 55-130 MM	1210.0055130	BIOMECH TITANIUM ROD 55-320 MM	1210.0055320
BIOMECH TITANIUM ROD 55-135 MM	1210.0055135	BIOMECH TITANIUM ROD 55-325 MM	1210.0055325
BIOMECH TITANIUM ROD 55-140 MM	1210.0055140	BIOMECH TITANIUM ROD 55-330 MM	1210.0055330
BIOMECH TITANIUM ROD 55-145 MM	1210.0055145	BIOMECH TITANIUM ROD 55-335 MM	1210.0055335
BIOMECH TITANIUM ROD 55-150 MM	1210.0055150	BIOMECH TITANIUM ROD 55-340 MM	1210.0055340
BIOMECH TITANIUM ROD 55-155 MM	1210.0055155	BIOMECH TITANIUM ROD 55-345 MM	1210.0055345
BIOMECH TITANIUM ROD 55-160 MM	1210.0055160	BIOMECH TITANIUM ROD 55-350 MM	1210.0055350
BIOMECH TITANIUM ROD 55-165 MM	1210.0055165	BIOMECH TITANIUM ROD 55-355 MM	1210.0055355
BIOMECH TITANIUM ROD 55-170 MM	1210.0055170	BIOMECH TITANIUM ROD 55-360 MM	1210.0055360
BIOMECH TITANIUM ROD 55-175 MM	1210.0055175	BIOMECH TITANIUM ROD 55-365 MM	1210.0055365
BIOMECH TITANIUM ROD 55-180 MM	1210.0055180	BIOMECH TITANIUM ROD 55-370 MM	1210.0055370
BIOMECH TITANIUM ROD 55-185 MM	1210.0055185	BIOMECH TITANIUM ROD 55-375 MM	1210.0055375
BIOMECH TITANIUM ROD 55-190 MM	1210.0055190	BIOMECH TITANIUM ROD 55-380 MM	1210.0055380
BIOMECH TITANIUM ROD 55-195 MM	1210.0055195	BIOMECH TITANIUM ROD 55-385 MM	1210.0055385
BIOMECH TITANIUM ROD 55-200 MM	1210.0055200	BIOMECH TITANIUM ROD 55-390 MM	1210.0055390
BIOMECH TITANIUM ROD 55-205 MM	1210.0055205	BIOMECH TITANIUM ROD 55-395 MM	1210.0055395
BIOMECH TITANIUM ROD 55-210 MM	1210.0055210	BIOMECH TITANIUM ROD 55-400 MM	1210.0055400
BIOMECH TITANIUM ROD 55-215 MM	1210.0055215	BIOMECH TITANIUM ROD 55-405 MM	1210.0055405
BIOMECH TITANIUM ROD 55-220 MM	1210.0055220	BIOMECH TITANIUM ROD 55-410 MM	1210.0055410
BIOMECH TITANIUM ROD 55-225 MM	1210.0055225	BIOMECH TITANIUM ROD 55-415 MM	1210.0055415

TITANIUM ROD



Product Name	Reference Number
BIOMECH TITANIUM ROD 55-420 MM	1210.0055420
BIOMECH TITANIUM ROD 55-425 MM	1210.0055425
BIOMECH TITANIUM ROD 55-430 MM	1210.0055430
BIOMECH TITANIUM ROD 55-435 MM	1210.0055435
BIOMECH TITANIUM ROD 55-440 MM	1210.0055440
BIOMECH TITANIUM ROD 55-445 MM	1210.0055445
BIOMECH TITANIUM ROD 55-450 MM	1210.0055450
BIOMECH TITANIUM ROD 55-455 MM	1210.0055455
BIOMECH TITANIUM ROD 55-460 MM	1210.0055460
BIOMECH TITANIUM ROD 55-465 MM	1210.0055465
BIOMECH TITANIUM ROD 55-470 MM	1210.0055470
BIOMECH TITANIUM ROD 55-475 MM	1210.0055475
BIOMECH TITANIUM ROD 55-480 MM	1210.0055480
BIOMECH TITANIUM ROD 55-485 MM	1210.0055485
BIOMECH TITANIUM ROD 55-490 MM	1210.0055490
BIOMECH TITANIUM ROD 55-495 MM	1210.0055495
BIOMECH TITANIUM ROD 55-500 MM	1210.0055500
BIOMECH TITANIUM ROD 55-505 MM	1210.0055505
BIOMECH TITANIUM ROD 55-510 MM	1210.0055510
BIOMECH TITANIUM ROD 55-515 MM	1210.0055515
BIOMECH TITANIUM ROD 55-520 MM	1210.0055520
BIOMECH TITANIUM ROD 55-525 MM	1210.0055525
BIOMECH TITANIUM ROD 55-530 MM	1210.0055530
BIOMECH TITANIUM ROD 55-535 MM	1210.0055535
BIOMECH TITANIUM ROD 55-540 MM	1210.0055540
BIOMECH TITANIUM ROD 55-545 MM	1210.0055545
BIOMECH TITANIUM ROD 55-550 MM	1210.0055550
BIOMECH TITANIUM ROD 55-555 MM	1210.0055555
BIOMECH TITANIUM ROD 55-560 MM	1210.0055560
BIOMECH TITANIUM ROD 55-565 MM	1210.0055565
BIOMECH TITANIUM ROD 55-570 MM	1210.0055570
BIOMECH TITANIUM ROD 55-575 MM	1210.0055575
BIOMECH TITANIUM ROD 55-580 MM	1210.0055580
BIOMECH TITANIUM ROD 55-585 MM	1210.0055585
BIOMECH TITANIUM ROD 55-590 MM	1210.0055590
BIOMECH TITANIUM ROD 55-595 MM	1210.0055595
BIOMECH TITANIUM ROD 55-600 MM	1210.0055600

STRAIGHT PEEK ROD



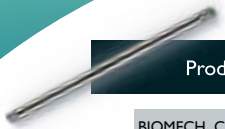
Product Name	Reference Number
BIOMECH STRAIGHT PEEK ROD 55-40 MM	1212.0055040
BIOMECH STRAIGHT PEEK ROD 55-45 MM	1212.0055045
BIOMECH STRAIGHT PEEK ROD 55-50 MM	1212.0055050
BIOMECH STRAIGHT PEEK ROD 55-55 MM	1212.0055055
BIOMECH STRAIGHT PEEK ROD 55-60 MM	1212.0055060
BIOMECH STRAIGHT PEEK ROD 55-65 MM	1212.0055065
BIOMECH STRAIGHT PEEK ROD 55-70 MM	1212.0055070
BIOMECH STRAIGHT PEEK ROD 55-75 MM	1212.0055075
BIOMECH STRAIGHT PEEK ROD 55-80 MM	1212.0055080
BIOMECH STRAIGHT PEEK ROD 55-85 MM	1212.0055085
BIOMECH STRAIGHT PEEK ROD 55-90 MM	1212.0055090
BIOMECH STRAIGHT PEEK ROD 55-95 MM	1212.0055095
BIOMECH STRAIGHT PEEK ROD 55-100 MM	1212.0055100
BIOMECH STRAIGHT PEEK ROD 55-105 MM	1212.0055105
BIOMECH STRAIGHT PEEK ROD 55-110 MM	1212.0055110
BIOMECH STRAIGHT PEEK ROD 55-115 MM	1212.0055115
BIOMECH STRAIGHT PEEK ROD 55-120 MM	1212.0055120
BIOMECH STRAIGHT PEEK ROD 55-125 MM	1212.0055125
BIOMECH STRAIGHT PEEK ROD 55-130 MM	1212.0055130
BIOMECH STRAIGHT PEEK ROD 55-135 MM	1212.0055135
BIOMECH STRAIGHT PEEK ROD 55-140 MM	1212.0055140
BIOMECH STRAIGHT PEEK ROD 55-145 MM	1212.0055145
BIOMECH STRAIGHT PEEK ROD 55-150 MM	1212.0055150
BIOMECH STRAIGHT PEEK ROD 55-155 MM	1212.0055155
BIOMECH STRAIGHT PEEK ROD 55-160 MM	1212.0055160
BIOMECH STRAIGHT PEEK ROD 55-165 MM	1212.0055165
BIOMECH STRAIGHT PEEK ROD 55-170 MM	1212.0055170
BIOMECH STRAIGHT PEEK ROD 55-175 MM	1212.0055175
BIOMECH STRAIGHT PEEK ROD 55-180 MM	1212.0055180
BIOMECH STRAIGHT PEEK ROD 55-185 MM	1212.0055185
BIOMECH STRAIGHT PEEK ROD 55-190 MM	1212.0055190
BIOMECH STRAIGHT PEEK ROD 55-195 MM	1212.0055195
BIOMECH STRAIGHT PEEK ROD 55-200 MM	1212.0055200
BIOMECH STRAIGHT PEEK ROD 55-205 MM	1212.0055205
BIOMECH STRAIGHT PEEK ROD 55-210 MM	1212.0055210

PRE-BENT PEEK ROD



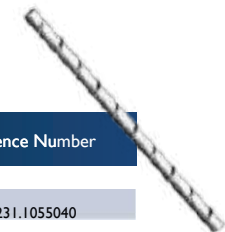
Product Name	Reference Number
BIOMECH PRE-BENT PEEK ROD 55-40 MM	I213.0055040
BIOMECH PRE-BENT PEEK ROD 55-45 MM	I213.0055045
BIOMECH PRE-BENT PEEK ROD 55-50 MM	I213.0055050
BIOMECH PRE-BENT PEEK ROD 55-55 MM	I213.0055055
BIOMECH PRE-BENT PEEK ROD 55-60 MM	I213.0055060
BIOMECH PRE-BENT PEEK ROD 55-65 MM	I213.0055065
BIOMECH PRE-BENT PEEK ROD 55-70 MM	I213.0055070
BIOMECH PRE-BENT PEEK ROD 55-75 MM	I213.0055075
BIOMECH PRE-BENT PEEK ROD 55-80 MM	I213.0055080
BIOMECH PRE-BENT PEEK ROD 55-85 MM	I213.0055085
BIOMECH PRE-BENT PEEK ROD 55-90 MM	I213.0055090
BIOMECH PRE-BENT PEEK ROD 55-95 MM	I213.0055095
BIOMECH PRE-BENT PEEK ROD 55-100 MM	I213.0055100
BIOMECH PRE-BENT PEEK ROD 55-105 MM	I213.0055105
BIOMECH PRE-BENT PEEK ROD 55-110 MM	I213.0055110
BIOMECH PRE-BENT PEEK ROD 55-115 MM	I213.0055115
BIOMECH PRE-BENT PEEK ROD 55-120 MM	I213.0055120
BIOMECH PRE-BENT PEEK ROD 55-125 MM	I213.0055125
BIOMECH PRE-BENT PEEK ROD 55-130 MM	I213.0055130
BIOMECH PRE-BENT PEEK ROD 55-135 MM	I213.0055135
BIOMECH PRE-BENT PEEK ROD 55-140 MM	I213.0055140
BIOMECH PRE-BENT PEEK ROD 55-145 MM	I213.0055145
BIOMECH PRE-BENT PEEK ROD 55-150 MM	I213.0055150
BIOMECH PRE-BENT PEEK ROD 55-155 MM	I213.0055155

CO-CR-MO ROD



Product Name	Reference Number	Product Name	Reference Number	Product Name	Reference Number
BIOMECH CO-CR-MO ROD 55-40 MM	I230.0055040	BIOMECH CO-CR-MO ROD 55-225 MM	I230.0055225	BIOMECH CO-CR-MO ROD 55-425 MM	I230.0055425
BIOMECH CO-CR-MO ROD 55-45 MM	I230.0055045	BIOMECH CO-CR-MO ROD 55-230 MM	I230.0055230	BIOMECH CO-CR-MO ROD 55-430 MM	I230.0055430
BIOMECH CO-CR-MO ROD 55-50 MM	I230.0055050	BIOMECH CO-CR-MO ROD 55-235 MM	I230.0055235	BIOMECH CO-CR-MO ROD 55-435 MM	I230.0055435
BIOMECH CO-CR-MO ROD 55-55 MM	I230.0055055	BIOMECH CO-CR-MO ROD 55-240 MM	I230.0055240	BIOMECH CO-CR-MO ROD 55-440 MM	I230.0055440
BIOMECH CO-CR-MO ROD 55-60 MM	I2030.0055060	BIOMECH CO-CR-MO ROD 55-255 MM	I230.0055255	BIOMECH CO-CR-MO ROD 55-445 MM	I2300055445
BIOMECH CO-CR-MO ROD 55-65 MM	I230.0055065	BIOMECH CO-CR-MO ROD 55-265 MM	I230.0055265	BIOMECH CO-CR-MO ROD 55-450 MM	I230.0055450
BIOMECH CO-CR-MO ROD 55-70 MM	I230.0055070	BIOMECH CO-CR-MO ROD 55-270 MM	I2300055270	BIOMECH CO-CR-MO ROD 55-455 MM	I230.0055455
BIOMECH CO-CR-MO ROD 55-75 MM	I2300055075	BIOMECH CO-CR-MO ROD 55-275 MM	I230.0055275	BIOMECH CO-CR-MO ROD 55-460 MM	I230.0055460
BIOMECH CO-CR-MO ROD 55-80 MM	I230.0055080	BIOMECH CO-CR-MO ROD 55-280 MM	I230.0055280	BIOMECH CO-CR-MO ROD 55-470 MM	I230.0055470
BIOMECH CO-CR-MO ROD 55-85 MM	I230.0055085	BIOMECH CO-CR-MO ROD 55-285 MM	I230.0055285	BIOMECH CO-CR-MO ROD 55-475 MM	I230.0055475
BIOMECH CO-CR-MO ROD 55-90 MM	I230.0055090	BIOMECH CO-CR-MO ROD 55-290 MM	I230.0055290	BIOMECH CO-CR-MO ROD 55-480 MM	I230.0055480
BIOMECH CO-CR-MO ROD 55-95 MM	I230.0055095	BIOMECH CO-CR-MO ROD 55-295 MM	I230.0055295	BIOMECH CO-CR-MO ROD 55-485 MM	I230.0055485
BIOMECH CO-CR-MO ROD 55-100MM	I230.0055100	BIOMECH CO-CR-MO ROD 55-300 MM	I230.0055300	BIOMECH CO-CR-MO ROD 55-490 MM	I230.0055490
BIOMECH CO-CR-MO ROD 55-105 MM	I230.0055105	BIOMECH CO-CR-MO ROD 55-305 MM	I230.0055305	BIOMECH CO-CR-MO ROD 55-495 MM	I230.0055495
BIOMECH CO-CR-MO ROD 55-110 MM	I230.0055110	BIOMECH CO-CR-MO ROD 55-310 MM	I230.0055310	BIOMECH CO-CR-MO ROD 55-500 MM	I2300055500
BIOMECH CO-CR-MO ROD 55-110 MM	I230.0055115	BIOMECH CO-CR-MO ROD 55-315 MM	I230.0055315	BIOMECH CO-CR-MO ROD 55-505 MM	I230.0055505
BIOMECH CO-CR-MO ROD 55-120 MM	I230.0055120	BIOMECH CO-CR-MO ROD 55-320 MM	I230.0055320	BIOMECH CO-CR-MO ROD 55-510 MM	I230.0055510
BIOMECH CO-CR-MO ROD 55-125 MM	I230.0055125	BIOMECH CO-CR-MO ROD 55-325 MM	I2300055325	BIOMECH CO-CR-MO ROD 55-515 MM	I230.0055515
BIOMECH CO-CR-MO ROD 55-130 MM	I2300055130	BIOMECH CO-CR-MO ROD 55-330 MM	I230.0055330	BIOMECH CO-CR-MO ROD 55-520 MM	I2300055520
BIOMECH CO-CR-MO ROD 55-135 MM	I230.0055135	BIOMECH CO-CR-MO ROD 55-335 MM	I230.0055335	BIOMECH CO-CR-MO ROD 55-525 MM	I230.0055525
BIOMECH CO-CR-MO ROD 55-140 MM	I230.0055140	BIOMECH CO-CR-MO ROD 55-340 MM	I230.0055340	BIOMECH CO-CR-MO ROD 55-530 MM	I230.0055530
BIOMECH CO-CR-MO ROD 55-145 MM	I230.0055145	BIOMECH CO-CR-MO ROD 55-345 MM	I2300055345	BIOMECH CO-CR-MO ROD 55-535 MM	I230.0055535
BIOMECH CO-CR-MO ROD 55-150 MM	I2300055150	BIOMECH CO-CR-MO ROD 55-350 MM	I230.0055350	BIOMECH CO-CR-MO ROD 55-545 MM	I230.0055545
BIOMECH CO-CR-MO ROD 55-155 MM	I230.0055155	BIOMECH CO-CR-MO ROD 55-355 MM	I230.0055355	BIOMECH CO-CR-MO ROD 55-550 MM	I230.0055550
BIOMECH CO-CR-MO ROD 55-160 MM	I230.0055160	BIOMECH CO-CR-MO ROD 55-360 MM	I230.0055360	BIOMECH CO-CR-MO ROD 55-555 MM	I230.0055555
BIOMECH CO-CR-MO ROD 55-165MM	I230.0055165	BIOMECH CO-CR-MO ROD 55-365 MM	I230.0055365	BIOMECH CO-CR-MO ROD 55-560 MM	I230.0055560
BIOMECH CO-CR-MO ROD 55-170 MM	I230.0055170	BIOMECH CO-CR-MO ROD 55-370 MM	I230.0055370	BIOMECH CO-CR-MO ROD 55-565 MM	I230.0055565
BIOMECH CO-CR-MO ROD 55-175MM	I230.0055175	BIOMECH CO-CR-MO ROD 55-375 MM	I230.0055375	BIOMECH CO-CR-MO ROD 55-570 MM	I230.0055570
BIOMECH CO-CR-MO ROD 55-180 MM	I230.0055180	BIOMECH CO-CR-MO ROD 55-380 MM	I230.0055380	BIOMECH CO-CR-MO ROD 55-575MM	I230.0055575
BIOMECH CO-CR-MOROD 55-185 MM	I230.0055185	BIOMECH CO-CR-MO ROD 55-390 MM	I230.0055390	BIOMECH CO-CR-MO ROD 55-580 MM	I230.0055580
BIOMECH CO-CR-MO ROD 55-190 MM	I230.0055190	BIOMECH CO-CR-MOROD 55-395 MM	I230.0055395	BIOMECH CO-CR-MO ROD 55-585 MM	I230.0055585
BIOMECH CO-CR-MOROD 55-195 MM	I230.0055195	BIOMECH CO-CR-MO ROD 55-400 MM	I230.0055400	BIOMECH CO-CR-MO ROD 555-590 MM	I230.0055590
BIOMECH CO-CR-MO ROD 55-200 MM	I230.0055200	BIOMECH CO-CR-MO ROD 55-405 MM	I230.0055405	BIOMECH CO-CR-MO ROD 55-595 MM	I230.0055595
BIOMECH CO-CR-MO ROD 55-205 MM	I230.0055205	BIOMECH CO-CR-MO ROD 55-410 MM	I230.0055410	BIOMECH CO-CR-MO ROD 55-600 MM	I230.0055600
BIOMECH CO-CR-MO ROD 55-210 MM	I230.0055210	BIOMECH CO-CR-MO ROD 55-415 MM	I230.0055415		
BIOMECH CO-CR-MO ROD 55-220 MM	I230.0055220	BIOMECH CO-CR-MO ROD 55-420 MM	I230.0055420		

DYNAMIC ROD



Product Name	Reference Number
BIOMECH DYNAMIC ROD 55-40 MM	I231.0055040
BIOMECH DYNAMIC ROD 55-45 MM	I231.0055045
BIOMECH DYNAMIC ROD 55-50 MM	I231.0055050
BIOMECH DYNAMIC ROD 55-55 MM	I231.0055055
BIOMECH DYNAMIC ROD 55-60 MM	I231.0055060
BIOMECH DYNAMIC ROD 55-65 MM	I231.0055065
BIOMECH DYNAMIC ROD 55-70 MM	I231.0055070
BIOMECH DYNAMIC ROD 55-75 MM	I231.0055075
BIOMECH DYNAMIC ROD 55-80 MM	I231.0055080
BIOMECH DYNAMIC ROD 55-85 MM	I231.0055085
BIOMECH DYNAMIC ROD 55-90 MM	I231.0055090
BIOMECH DYNAMIC ROD 55-95 MM	I231.0055095
BIOMECH DYNAMIC ROD 55-100 MM	I231.0055100
BIOMECH DYNAMIC ROD 55-105 MM	I231.0055105
BIOMECH DYNAMIC ROD 55-110 MM	I231.0055110
BIOMECH DYNAMIC ROD 55-115 MM	I231.0055115
BIOMECH DYNAMIC ROD 55-120 MM	I231.0055120
BIOMECH DYNAMIC ROD 55-125 MM	I231.0055125
BIOMECH DYNAMIC ROD 55-130 MM	I231.0055130
BIOMECH DYNAMIC ROD 55-135 MM	I231.0055135
BIOMECH DYNAMIC ROD 55-140 MM	I231.0055140
BIOMECH DYNAMIC ROD 55-145 MM	I231.0055145
BIOMECH DYNAMIC ROD 55-150 MM	I231.0055150

Product Name	Reference Number
BIOMECH DYNAMIC ROD (ELASTIC) 55-40 MM	I231.1055040
BIOMECH DYNAMIC ROD (ELASTIC) 55-45 MM	I231.1055045
BIOMECH DYNAMIC ROD (ELASTIC) 55-50 MM	I231.1055050
BIOMECH DYNAMIC ROD (ELASTIC) 55-55 MM	I231.1055055
BIOMECH DYNAMIC ROD (ELASTIC) 55-60 MM	I231.1055060
BIOMECH DYNAMIC ROD (ELASTIC) 55-65 MM	I231.1055065
BIOMECH DYNAMIC ROD (ELASTIC) 55-70 MM	I231.1055070
BIOMECH DYNAMIC ROD (ELASTIC) 55-75 MM	I231.1055075
BIOMECH DYNAMIC ROD (ELASTIC) 55-80 MM	I231.1055080
BIOMECH DYNAMIC ROD (ELASTIC) 55-85 MM	I231.1055085
BIOMECH DYNAMIC ROD (ELASTIC) 55-90 MM	I231.1055090
BIOMECH DYNAMIC ROD (ELASTIC) 55-90 MM	I231.1055090
BIOMECH DYNAMIC ROD (ELASTIC) 55-90 MM	I231.1055090
BIOMECH DYNAMIC ROD (ELASTIC) 55-95 MM	I231.1055095
BIOMECH DYNAMIC ROD (ELASTIC) 55-100 MM	I231.1055100
BIOMECH DYNAMIC ROD (ELASTIC) 55-105 MM	I231.1055105
BIOMECH DYNAMIC ROD (ELASTIC) 55-110 MM	I231.1055110
BIOMECH DYNAMIC ROD (ELASTIC) 55-115 MM	I231.1055115
BIOMECH DYNAMIC ROD (ELASTIC) 55-120 MM	I231.1055120
BIOMECH DYNAMIC ROD (ELASTIC) 55-120 MM	I231.1055120
BIOMECH DYNAMIC ROD (ELASTIC) 55-125 MM	I231.1055125
BIOMECH DYNAMIC ROD (ELASTIC) 55-130 MM	I231.1055130
BIOMECH DYNAMIC ROD (ELASTIC) 55-135 MM	I231.1055135
BIOMECH DYNAMIC ROD (ELASTIC) 55-140 MM	I231.1055140
BIOMECH DYNAMIC ROD (ELASTIC) 55-145 MM	I231.1055145
BIOMECH DYNAMIC ROD (ELASTIC) 55-150 MM	I231.1055150

Connectors

Connectors are intended to provide immobilization and stabilization of spinal segments in skeletally mature patients as an adjunct to fusion in the treatment of acute and chronic instabilities or deformities of the thoracic, lumbar and sacral spine.

Connectors and Multiaxial connectors providing increased stability to all the spine rod-screw construct. Connectors effectively increase the rigidity of rod-screw constructs in the spine. Connectors can be placed between the rods to increase stability



Lateral Connector
(1218.0000)



Multiaxial Connector
(1216.0055)

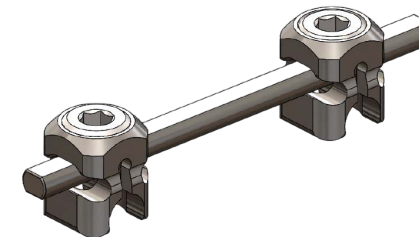


Omniaxial Connector
(1215.0000)



Domino
(1217.0000)

- Domino: is a device designed with the aim to ensure intervertebral fusion of the cervical segment of the spine and which purpose is to restore the disc height, by means of anterior stabilization. It is made of an intervertebral fusion cage and a reduced-profile cervical plate, properly integrated.



Crosslink
(1214.0000)

- is one such low-profile spinal instrumentation system spine surgeons are using to segmentally stabilize spinal instability and deformity. In general, crosslinking devices are simple transverse/ placed implants that connect the implants (rod) on one side of the spine to the implants (rod) on the other side. The use of crosslinking devices to provide additional stability to posterior spinal instrumentation constructs is universally accepted.
- Designed to speed up and facilitate connection.
- Crosslink lengths are 40-60-80-100 mm.
- It clings easily and effortlessly.



Posterior Sacro-Iliac Screw
(1229.0000)

- Sacroiliac screw: The sacral percutaneous fixation has many advantages but can be associated with a significant exposure to X-ray radiation. Currently, sacroiliac screw fixation represents the only minimally invasive technique to stabilize the posterior pelvic ring. It is a technique that should be used by experienced surgeons.



Posterior Iliac Connector
(1228.0000)

- The posterior iliac connector is an implant component used in spinal surgery to provide fixation between the spine and the pelvic bone. It is especially utilized in long-segment spinal fusions to enhance stability at the lumbosacral junction. This connector links the spinal rod to iliac screws, helping to distribute mechanical loads more evenly. Made from durable materials like titanium, it comes in various shapes and sizes. Its modular design allows for intraoperative flexibility and strengthens the overall construct.



Posterior Sacral Block
(1227.0000)

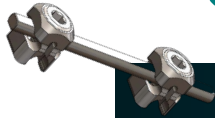
- The posterior sacral block is a regional anesthesia technique applied from the posterior aspect of the sacrum. In this method, the sacral nerve roots are targeted to temporarily block pain transmission to the pelvis, perineum, buttocks, and lower extremities. It is commonly used in anorectal surgeries, labor pain management, or treatment of chronic pelvic pain. The procedure involves injecting local anesthetic agents into the sacral foramina using a needle.



Posterior Sacral Screw
(1226.0000)

- SA posterior sacral screw is a surgical implant used to stabilize fractures and dislocations of the pelvic ring, particularly those involving the posterior (back) portion of the pelvis. These screws are inserted into the sacrum, the bone at the base of the spine, and are commonly used to help maintain anatomical alignment and provide stability.

CROSSLINK- OMNIAXIAL-MULTIAXIAL-LATERAL CONNECTOR



Product Name	Reference Number
BIOMECH CROSSLINK 40 MM	1214.0055040
BIOMECH CROSSLINK 60 MM	1214.0055060
BIOMECH CROSSLINK 80 MM	1214.0055080



Product Name	Reference Number
BIOMECH CROSSLINK WITH CLAMP 40 MM	1214.1005040
BIOMECH CROSSLINK WITH CLAMP 60 MM	1214.1005060
BIOMECH CROSSLINK WITH CLAMP 80 MM	1214.1005080



Product Name	Reference Number
BIOMECH OMNIAXIAL CONNECTOR 40 MM	1215.0000040
BIOMECH OMNIAXIAL CONNECTOR 60 MM	1215.0000060
BIOMECH OMNIAXIAL CONNECTOR 80 MM	1215.0000080
BIOMECH OMNIAXIAL CONNECTOR 100 MM	1215.0000100

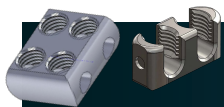


Product Name	Reference Number
BIOMECH MULTIAXIAL CONNECTOR 40 MM	1216.0055040
BIOMECH MULTIAXIAL CONNECTOR 60 MM	1216.0055060
BIOMECH MULTIAXIAL CONNECTOR 80 MM	1216.0055080
BIOMECH MULTIAXIAL CONNECTOR 100 MM	1216.0055100



Product Name	Reference Number
BIOMECH LATERAL CONNECTOR TYPE 1	1218.0000001
BIOMECH LATERAL CONNECTOR TYPE 2	1218.0000002
BIOMECH LATERAL CONNECTOR TYPE 3	1218.0000003
BIOMECH LATERAL CONNECTOR TYPE 4	1218.0000004

DOMINO-PEDICLE HOOK- POLYAXIAL HOOK-LAMINAR HOOK



Product Name	Reference Number
BIOMECH DOMINO ONE SIDE	1217.0000001
BIOMECH DOMINO DOUBLE SIDE	1217.0000002
BIOMECH DOMINO DOUBLE SIDE -PARALLEL SMALL	1217.0000003
BIOMECH DOMINO DOUBLE SIDE -PARALLEL OPEN BOTH SIDES	1217.0000004
BIOMECH DOMINO DOUBLE SIDE -PARALLEL OPEN ONE SIDE	1217.0000005



Product Name	Reference Number
BIOMECH PEDICLE HOOK 6 MM	1219.0005506
BIOMECH PEDICLE HOOK 8 MM	1219.0005508
BIOMECH PEDICLE HOOK 10 MM	1219.0005510
BIOMECH PEDICLE HOOK 12 MM	1219.0005512



Product Name	Reference Number
BIOMECH LAMINAR HOOK 6 MM	1220.0005506
BIOMECH LAMINAR HOOK 8 MM	1220.0005508
BIOMECH LAMINAR HOOK 10 MM	1220.0005510
BIOMECH LAMINAR HOOK 12 MM	1220.0005512



Product Name	Reference Number
BIOMECH POLYAXIAL HOOK 6 MM	1223.0005506
BIOMECH POLYAXIAL HOOK 8 MM	1223.0005508
BIOMECH POLYAXIAL HOOK 10 MM	1223.0005510
BIOMECH POLYAXIAL HOOK 12 MM	1223.0005512

OFFSET HOOK-TRANSVERSE HOOK



Product Name	Reference Number
BIOMECH OFFSET HOOK RIGHT 6 MM	I221.0005506
BIOMECH OFFSET HOOK RIGHT 8 MM	I221.0005508
BIOMECH OFFSET HOOK RIGHT 10 MM	I221.0005510
BIOMECH OFFSET HOOK RIGHT 12 MM	I221.0005512



Product Name	Reference Number
BIOMECH OFFSET HOOK LEFT 6 MM	I222.0005506
BIOMECH OFFSET HOOK LEFT 8 MM	I222.0005508
BIOMECH OFFSET HOOK LEFT 10 MM	I222.0005510
BIOMECH OFFSET HOOK LEFT 12 MM	I222.0005512



Product Name	Reference Number
BIOMECH TRANSVERSE HOOK RIGHT 6 MM	I224.0005506
BIOMECH TRANSVERSE HOOK RIGHT 8 MM	I224.0005508
BIOMECH TRANSVERSE HOOK RIGHT 10 MM	I224.0005510
BIOMECH TRANSVERSE HOOK RIGHT 12 MM	I224.0005512



Product Name	Reference Number
BIOMECH TRANSVERSE HOOK LEFT 6 MM	I225.0005506
BIOMECH TRANSVERSE HOOK LEFT 8 MM	I225.0005508
BIOMECH TRANSVERSE HOOK LEFT 10 MM	I225.0005510
BIOMECH TRANSVERSE HOOK LEFT 12 MM	I225.0005512

POSTERIOR SACRAL SCREW



Product Name	Reference Number
BIOMECH POSTERIOR SACRAL SCREW 60-30	1226.0006030
BIOMECH POSTERIOR SACRAL SCREW 60-35	1226.0006035
BIOMECH POSTERIOR SACRAL SCREW 60-40	1226.0006040
BIOMECH POSTERIOR SACRAL SCREW 60-45	1226.0006045
BIOMECH POSTERIOR SACRAL SCREW 60-50	1226.0006050
BIOMECH POSTERIOR SACRAL SCREW 60-55	1226.0006055
BIOMECH POSTERIOR SACRAL SCREW 60-60	1226.0006060
BIOMECH POSTERIOR SACRAL SCREW 70-30	1226.0007030
BIOMECH POSTERIOR SACRAL SCREW 70-35	1226.0007035
BIOMECH POSTERIOR SACRAL SCREW 70-40	1226.0007040
BIOMECH POSTERIOR SACRAL SCREW 70-45	1226.0007045
BIOMECH POSTERIOR SACRAL SCREW 70-50	1226.0007050
BIOMECH POSTERIOR SACRAL SCREW 70-55	1226.0007055
BIOMECH POSTERIOR SACRAL SCREW 70-60	1226.0007060

POSTERIOR SACRAL BLOCK



Product Name	Reference Number
BIOMECH POSTERIOR SACRAL BLOCK RIGHT	1227.0000001
BIOMECH POSTERIOR SACRAL BLOCK LEFT	1227.0000002

POSTERIOR ILIAC CONNECTOR / SACRO-ILIAC SCREW



Product Name	Reference Number
BIOMECH POSTERIOR ILIAC CONNECTOR	I228.0000001



Product Name	Reference Number	Product Name	Reference Number
BIOMECH POSTERIOR SACRO-ILIAC SCREW 40-40	I229.0004040	BIOMECH POSTERIOR SACRO-ILIAC SCREW 80-40	I229.0008040
BIOMECH POSTERIOR SACRO-ILIAC SCREW 40-50	I229.0004050	BIOMECH POSTERIOR SACRO-ILIAC SCREW 80-50	I229.0008050
BIOMECH POSTERIOR SACRO-ILIAC SCREW 40-60	I229.0004060	BIOMECH POSTERIOR SACRO-ILIAC SCREW 80-60	I229.0008060
BIOMECH POSTERIOR SACRO-ILIAC SCREW 40-70	I229.0004070	BIOMECH POSTERIOR SACRO-ILIAC SCREW 80-70	I229.0008070
BIOMECH POSTERIOR SACRO-ILIAC SCREW 40-80	I229.0004080	BIOMECH POSTERIOR SACRO-ILIAC SCREW 80-80	I229.0008080
BIOMECH POSTERIOR SACRO-ILIAC SCREW 40-90	I229.0004090	BIOMECH POSTERIOR SACRO-ILIAC SCREW 80-85	I229.0008085
BIOMECH POSTERIOR SACRO-ILIAC SCREW 40-100	I229.0004100	BIOMECH POSTERIOR SACRO-ILIAC SCREW 80-90	I229.0008090
BIOMECH POSTERIOR SACRO-ILIAC SCREW 50-40	I229.0005040	BIOMECH POSTERIOR SACRO-ILIAC SCREW 80-100	I229.0008100
BIOMECH POSTERIOR SACRO-ILIAC SCREW 50-50	I229.0005050	BIOMECH POSTERIOR SACRO-ILIAC SCREW 80-105	I229.0008105
BIOMECH POSTERIOR SACRO-ILIAC SCREW 50-60	I229.0005060	BIOMECH POSTERIOR SACRO-ILIAC SCREW 90-40	I229.0009040
BIOMECH POSTERIOR SACRO-ILIAC SCREW 50-70	I229.0005070	BIOMECH POSTERIOR SACRO-ILIAC SCREW 90-50	I229.0009050
BIOMECH POSTERIOR SACRO-ILIAC SCREW 50-80	I229.0005080	BIOMECH POSTERIOR SACRO-ILIAC SCREW 90-60	I229.0009060
BIOMECH POSTERIOR SACRO-ILIAC SCREW 50-90	I229.0005090	BIOMECH POSTERIOR SACRO-ILIAC SCREW 90-70	I229.0009070
BIOMECH POSTERIOR SACRO-ILIAC SCREW 50-100	I229.0005100	BIOMECH POSTERIOR SACRO-ILIAC SCREW 90-80	I229.0009080
BIOMECH POSTERIOR SACRO-ILIAC SCREW 60-40	I229.0006040	BIOMECH POSTERIOR SACRO-ILIAC SCREW 90-85	I229.0009085
BIOMECH POSTERIOR SACRO-ILIAC SCREW 60-50	I229.0006050	BIOMECH POSTERIOR SACRO-ILIAC SCREW 90-90	I229.0009090
BIOMECH POSTERIOR SACRO-ILIAC SCREW 60-60	I229.0006060	BIOMECH POSTERIOR SACRO-ILIAC SCREW 90-95	I229.0009095
BIOMECH POSTERIOR SACRO-ILIAC SCREW 60-70	I229.0006070	BIOMECH POSTERIOR SACRO-ILIAC SCREW 90-100	I229.0009100
BIOMECH POSTERIOR SACRO-ILIAC SCREW 60-80	I229.0006080	BIOMECH POSTERIOR SACRO-ILIAC SCREW 90-105	I229.0009105
BIOMECH POSTERIOR SACRO-ILIAC SCREW 60-90	I229.0006090		
BIOMECH POSTERIOR SACRO-ILIAC SCREW 60-100	I229.0006100		
BIOMECH POSTERIOR SACRO-ILIAC SCREW 70-40	I229.0007040		
BIOMECH POSTERIOR SACRO-ILIAC SCREW 70-50	I229.0007050		
BIOMECH POSTERIOR SACRO-ILIAC SCREW 70-60	I229.0007060		
BIOMECH POSTERIOR SACRO-ILIAC SCREW 70-70	I229.0007070		
BIOMECH POSTERIOR SACRO-ILIAC SCREW 70-80	I229.0007080		
BIOMECH POSTERIOR SACRO-ILIAC SCREW 70-90	I229.0007090		
BIOMECH POSTERIOR SACRO-ILIAC SCREW 70-100	I229.0007100		
BIOMECH POSTERIOR SACRO-ILIAC SCREW 70-70	I229.0007050		
BIOMECH POSTERIOR SACRO-ILIAC SCREW 70-80	I229.0007055		
BIOMECH POSTERIOR SACRO-ILIAC SCREW 70-90	I229.0007060		
BIOMECH POSTERIOR SACRO-ILIAC SCREW 70-100	I229.0007045		
BIOMECH POSTERIOR SACRO-ILIAC SCREW 80-40	I229.0007050		
BIOMECH POSTERIOR SACRO-ILIAC SCREW 80-50	I229.0007055		

CORPECTOMY MESH



CORPECTOMY MESH SYSTEM

Corpectomy Mesh is a vertebral body replacement device for the cervical, thoracic and lumbar spine. Titanium alloy implants in various footprints and heights enable the surgeon to choose the configuration that is best suited to the patient's individual pathology and anatomy. The mesh may also be trimmed for a custom fit.

The implants can be inserted anteriorly, laterally or anterolaterally.

- The round and cylindrical implants are designed to treat defects in the cervical, thoracic and lumbar spine
- Available in a wide variety of diameters, lengths and styles
- Greater strength limits deformation
- Greater thickness provides more surface area coming into contact with host bone
- Less deformation during impaction and even stress distribution
- Less risk of damaging soft tissues
- Smooth insertion
- Easier manipulation into tight spaces
- Provides enhanced imaging and excellent biocompatibility



Corpectomy Mesh



Corpectomy Profil Mesh

CORPECTOMY MESH



Product Name	Reference Number
BIOMECH CORPECTOMY MESH ø 8 / 80mm	1300.000880
BIOMECH CORPECTOMY MESH ø9 / 80mm	1300.000980
BIOMECH CORPECTOMY MESH ø10 / 80mm	1300.001080
BIOMECH CORPECTOMY MESH ø11 / 80mm	1300.001180
BIOMECH CORPECTOMY MESH ø12 / 80mm	1300.001280
BIOMECH CORPECTOMY MESH ø13 / 80mm	1300.001380
BIOMECH CORPECTOMY MESH ø14 / 80mm	1300.001480
BIOMECH CORPECTOMY MESH ø15 / 80mm	1300.001580
BIOMECH CORPECTOMY MESH ø16 / 80mm	1300.001680
BIOMECH CORPECTOMY MESH ø17 / 80mm	1300.001780
BIOMECH CORPECTOMY MESH ø18 / 80mm	1300.001880
BIOMECH CORPECTOMY MESH ø19 / 80mm	1300.001980
BIOMECH CORPECTOMY MESH ø20 / 80mm	1300.002080
BIOMECH CORPECTOMY MESH ø21 / 80mm	1300.002180
BIOMECH CORPECTOMY MESH ø22 / 80mm	1300.002280
BIOMECH CORPECTOMY MESH ø23 / 80mm	1300.002380
BIOMECH CORPECTOMY MESH ø24 / 80mm	1300.002480
BIOMECH CORPECTOMY MESH ø25 / 80mm	1300.002580
BIOMECH CORPECTOMY PROFIL MESH 13 18mm	1301.0001318
BIOMECH CORPECTOMY PROFIL MESH 16 21mm	1301.0001621



LIGAMED[®]

— M E D I C A L —

Ligamed Tıbbi Malzemeler Sanayi ve Ticaret Limited Şirketi

Main Office Address : Keçiliköyosb Mah. İsmail Kahraman
Cad. No:1 İç Kapı No:1A Yunusemre/MANİSA

Branch Office Address : Kemalpaşa Mah. 7416/3 Cad. No:6
Bornova/İZMİR

Phone : +90 236 213 10 14 / +90 236 213 10 16

Web : www.biomech.com.tr

Mail : info@ligamed.com.tr

Fax : +90 236 213 10 17